

# RENTAL SOLUTIONS CATALOGUE

MAR 2026



**Dust and  
Aerosol  
Monitoring**

**HVAC  
Monitoring**



**Fit  
Testing**



# RENTAL SOLUTIONS CATALOGUE

Renting can be a cost-effective solution to ensure you have the tools you need, when you need them.

As one of Australia's leading specialist suppliers of testing and monitoring equipment, Kenelec Scientific stocks an **extensive range of instruments** to help your business perform at its best without the commitment of purchasing.

## DUST AND AEROSOL MONITORING 3

- Real-Time Dust Monitoring Instruments 3
- Environmental Dust Monitoring Systems 4
- Personal Dust and Aerosol Monitors 5

## IAQ MONITORING 6

- Ultrafine Particle Counters 6

## CLEANROOM MONITORING 7

- Cleanroom Particle Counters 7
- Microbial Air Samplers 7

## HVAC MONITORING 8

- Duct Leakage Testers 8
- Air Balancing Hoods 9
- Manometers 10
- Anemometers 11

## FIT TESTING 13

- Real-Time Quantitative Respirator Fit Testers 13

### GOT A QUESTION? GET IN TOUCH!

Have an enquiry about a rental product? You can contact our remarkable **Rental team** via the following channels:

- +61 3 9873 1022
- rental@kenelec.com.au
- www.kenelec.com.au

## MORE SOLUTIONS FROM KENELEC SCIENTIFIC



# DUST AND AEROSOL MONITORING

## REAL-TIME DUST MONITORING INSTRUMENTS

Need immediate access to dust and aerosol data to determine exposure levels and to be able to take immediate corrective actions? Do you need more than a single total sample value for a full shift? Then, real-time light-scattering laser photometers are the ideal solution. Kenelec Scientific offers the DustTrak range of laser photometers from TSI. The DustTrak series are recognised internationally as the top performing real-time instrument for dust and aerosol measurements for harsh industrial workplaces, construction & environmental sites and other outdoor applications.

## TSI DUSTTRAK II AND DRX AEROSOL MONITORS

The DustTrak series measures aerosol contaminants such as dust, smoke, fumes and mists, giving you real-time aerosol mass readings. Offering a suitable solution for a range of environments from clean office settings to harsh industrial workplaces, construction and environmental sites.

Used by the EPA, regulators, mining companies, quarries, construction companies, councils, leading OH&S consultants, environmental consultants, the defence department, universities and research groups, the DustTrak series of monitors are the ultimate devices for dust monitoring applications.

### Features

- Measure size-segregated mass fraction concentrations corresponding to:
  - PM1
  - PM2.5
  - PM4 (Respirable)
  - PM10
  - TotalPM
- Lightweight and portable
- Highly accurate measurements down to 0.1µm
- 60,000+ point data logging capability
- Complete with software and accessories

### Applications

- Industrial/occupational hygiene surveys
- Indoor air quality investigations
- Outdoor environmental monitoring
- Baseline trending and screening
- Engineering control evaluations
- Remote monitoring
- Process monitoring
- Emissions monitoring
- Aerosol research studies



**TSI 8533 DUSTTRAK DRX  
DESKTOP AEROSOL MONITOR**

### Features

- Measure PM fractions simultaneously
- 0.1 to 10 µm particle size range
- 0.001 to 150 mg/m3 concentration range
- 6600mA rechargeable Li-Ion battery
- 5.7" VGA colour touch screen
- 37mm filter sample collection capability\*

\*cartridges not included, must be purchased separately



example system; refer to **page 4**  
for full system options



**TSI 8534 DUSTTRAK DRX  
HANDHELD AEROSOL MONITOR**

### Features

- Measure PM fractions simultaneously
- 0.1 to 15 µm particle size range
- 0.001 to 150 mg/m3 concentration range
- 3600mA rechargeable Li-Ion battery
- 3.5" VGA colour touchscreen

## ENVIRONMENTAL DUST MONITORING SYSTEMS

Outdoor dust and aerosol monitoring is a growing requirement covering a range of applications. Examples include outdoor construction sites, community & worker exposure, fugitive emissions, site perimeter monitoring, process monitoring, bush fire monitoring and remote monitoring applications. A reliable and flexible solution is what is needed to address these requirements. Kenelec Scientific offers flexible systems based on the TSI DustTrak.

### AEROSOL MONITOR

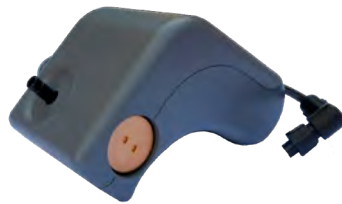


#### TSI 8533 DUSTTRAK DRX

Measure all PM fractions simultaneously.

See page 3 for more details.

### AUTOZERO MODULE



#### TSI 801690 AUTOZERO MODULE

Required for all environmental monitoring systems. Eliminates zero drift when sampling over extended periods.

### HUMID OR FOGGY ENVIRONMENT?



#### TSI 801851 HEATED INLET SAMPLE CONDITIONER FOR 8535 ENCLOSURE

Removes humidity and water vapour from the sample, reducing elevated measurements.

### ENCLOSURE



#### TSI 8535 DUSTTRAK ENVIRONMENTAL ENCLOSURE

Weatherproof Pelican enclosure.

### TRIPOD



#### TRIPOD

Tripod for enclosure to be mounted on.

### POWER OPTIONS



#### MAINS POWER ADAPTER

When you have access to mains power on site you can use a weatherproof power adapter, with 5m cable.



#### BATTERY SYSTEM

The BOM801801 Battery Systems allows the DustTrak system to operate up to 48 hours before swap over. (Includes spare batteries and charger.)



#### SOLAR POWER SYSTEM

This easy to erect system can provide ongoing power, with the storage battery holding approximately five days of power. (Includes panels, battery, battery case and cabling.)

### DATA ACCESS



#### STANDARD USB

The DustTrak's 60,000 point data logging can be uploaded via USB.



#### REMOTE DATA ACCESS

Access your DustTrak's data remotely via 3G with SMS alerts.

### ASK US A QUESTION

If you need a hand with building your custom rental system, just contact our talented team to discuss your specific requirements.

## PERSONAL DUST AND AEROSOL MONITORS

Real-time data is of great benefit when using a personal monitor for exposure to dust and aerosols. Overexposure can be detected quickly and preventive measures such as changing ventilation rates and addressing equipment issues can be taken immediately. For personal monitoring, Kenelec Scientific has the TSI AM520 SidePak™ range of wearable monitors available for rent.

### TSI AM520/AM520i SIDEPAK™ PERSONAL AEROSOL MONITOR

The AM520/AM520i provide real-time aerosol mass concentration readings of dusts, fumes, mists, smoke and fog within a worker breathing zone. Newly designed inlet conditioners increase the mass concentration capability and provide size fraction cut points for PM 10, PM 4 (Respirable), PM 5 (China Respirable), PM 2.5, PM 1 and 0.8µm Diesel Particulate Matter (DPM). These monitors are the perfect solution for real-time, personal aerosol sampling in a variety of workplace environments, including but not limited to general industry, foundries, construction sites, chemical plants, refineries, petrochemical, power and utilities, transportation, aerospace, maritime, confined spaces and mining.

#### AM520



#### Features

- Robust impactors for higher mass concentration range
- Audible and visual alarms with user-selectable alarm levels
- 0.8µm cyclone for DPM measurement
- High capacity battery enabling 20+ hours of continuous operation
- Colour OLED display
- Real-time mass concentration measurement and data logging for “in-the-field” data analysis

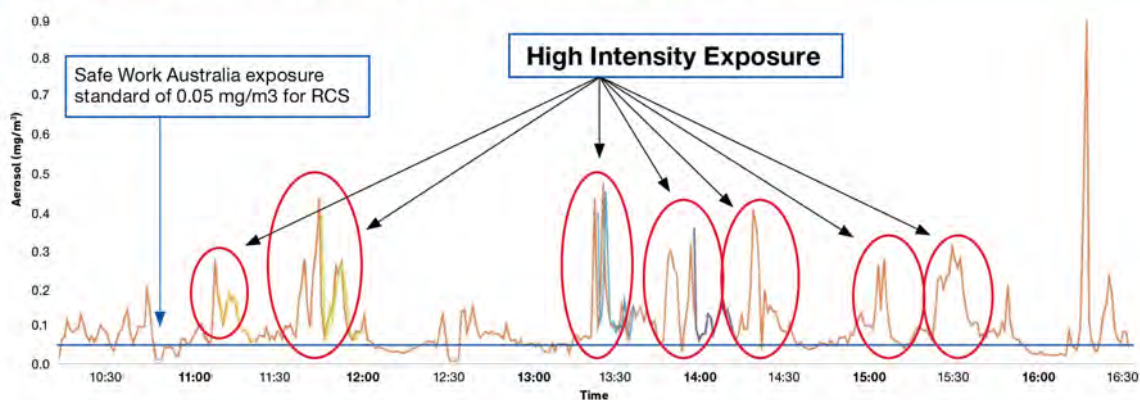
#### AM520i



#### Features

- Certified intrinsically safe by SIMTARS for use in underground mines in Australia (IECEx SIM 19.0009X)
- IECEx and ATEX certified
- Audible and visual alarms
- 0.8 µm DPM impactor
- High capacity battery
- Color OLED display

### DUST CONCENTRATION VS TIME



#### TEST STATISTICS

Channel	Average	Minimum	Maximum	Cal Factor	TWA
Aerosol (mg/m <sup>3</sup> )	0.101	0	24.1	1	0.08
		10/08/2018 02:28:05	10/08/2018 04:23:03	factory 06/01/2018	

Instead of waiting several days for lab results, the AM520 measured dust concentration in real time. The graphical display of logged data added a level of detail that cannot be achieved with a single data point obtained from a gravimetric sample.

# IAQ MONITORING

## ULTRAFINE PARTICLE COUNTERS

Ultrafine particles (UFPs) are everywhere: polluting the air, eroding our health, and affecting our climate. The first step in cleaning the air of these potentially hazardous particles is to measure them. Using proven technology, TSI Ultrafine Particle Counters give direct, real-time measurement of workplace ultrafine particulate levels.

### TSI 8525 P-TRAK ULTRAFINE PARTICLE COUNTER

The 8525 is ideal for measuring workplace ultrafine particulate levels, as well as helping eliminate indoor air quality (IAQ) problems. This portable instrument detects and counts particles smaller than 1 micrometer that often accompany or signal the presence of pollutants.

The P-Trak locates obvious pollutant sources such as boilers, furnaces, and vehicles, and it also detects the not-so-obvious sources such as photocopy machines and printers. Use this instrument to detect the migration of toxic exhaust gases, malfunctioning office equipment, pinhole gasket leaks in boilers and a wide variety of other problems.

#### Features

- Real-time ultrafine particle counter
- Measure particle sizes 0.02-1 $\mu$ m
- Easy to use
- Data log information

#### Applications

- Check office equipment
- Cleanroom containment checks
- Filter checks
- Check fume hoods
- Check safety cabinets
- Vehicle emission migration
- Combustion leaks
- Control smoking areas



# CLEANROOM MONITORING

## CLEANROOM PARTICLE COUNTERS

The TSI range of AeroTrak® particle counters provide the flexibility and features to exactly match your requirements, from simple spot checking to meeting rigid cleanroom classification standards.



### TSI 9306 AEROTRAK® HANDHELD PARTICLE COUNTER

The 9306 offers the most features and flexibility for customers interested in versatile handheld particle contamination monitoring.

#### Features

- Complies with all requirements of ISO 21501-4
- 0.3 to 25 µm size range
- 0.1 CFM (2.83 L/min) flow rate
- Integrated handle for one hand operation
- Removable, rechargeable Li-ion battery
- Long life laser diode



### TSI 9500 AEROTRAK® PORTABLE PARTICLE COUNTER

The 9500 offers best-in-class features and versatility, providing a complete solution for your certification needs.

#### Features

- Complies with all requirements of ISO 21501-4
- 0.5 to 25 µm size range
- 3.53 CFM (100 L/min) flow rate, 0.3 to 25 µm
- Industry's loudest audible alarm

## MICROBIAL AIR SAMPLERS

Being able to detect viable particles in your cleanroom is important for compliance with regulations and for ensuring that microbial contamination is not negatively impacting your products or processes.

### EMTEK P100 PORTABLE MICROBIAL AIR SAMPLER

With its superior functionality and key benefits, the P100 is destined to be the industry standard for microbial air sampling.

#### Features

- Lightweight and portable
- Controlled sample rates of 28.3 (1 CFM) and 100 LPM
- Long battery life
- Delay/Test/Hold functionality
- CFR Part 11 regulatory compliant data control
- 500 sample records storage
- Output to optional label printer, USB, or optional PC based software
- IR remote control



# HVAC MONITORING

## DUCT LEAKAGE TESTERS

Leakage in commercial ducts can result in high operating costs as more air and energy are needed to maintain standard conditions. Duct leakage testing is a necessity to ensure costs are kept down and systems meet required standards.



### DID YOU KNOW?

Like many of our test instruments, the **PANDA** meets the **NEBB** instrument requirements for testing, adjusting and balancing of HVAC systems. You can now rent a PANDA to complete your commissioning.



## AIRFLOW INSTRUMENTS PAN341 PANDA DUCT LEAKAGE TESTER

The Airflow Instruments PAN341 Positive and Negative Duct Accreditation (PANDA) Duct Leakage Tester provides contractors, commissioning engineers, and research & development technicians the best way to quantify air leakage in ductwork, as well as the ability to measure the performance of ducted systems. The PAN341 provides a fast, accurate, automated solution that enhances energy savings in buildings and helps to ensure compliance with Australian standard AS 4254.2:2012, European standards like EN12237, EN1507, EN13779, EUROVENT 2/2 standards and with American standards like SMACNA, enhancing energy savings in buildings.

### Features

- Positive and negative duct leakage testing in one rig
- Energy savings by testing and minimising duct leaks
- Accuracy is  $\pm 2,5\%$  of volume flow
- Unique performance and fan speed control charge up of duct system to test static pressure within minutes
- Fits in the back of vans and estate cars

### Applications

- New building installations
- Testing of existing installations

## AIR BALANCING HOODS

Offering durable, trouble-free operation, TSI's lightweight, ergonomically designed capture hood kits save time and money by combining multiple measurement tools into one package. These hoods and related accessories help you create healthy and energy-efficient environments while meeting local codes, guidelines and regulations for ventilation systems.

### TSI 8380 ACCUBALANCE AIR CAPTURE HOOD

The 8380 is a multi-purpose electronic air balancing instrument primarily used for efficiently taking direct air volume readings at diffusers and grilles. It features a detachable micromanometer which can be used with optional probes for increased flexibility in multiple measurement applications.

#### Features

- Ergonomic design and ultra light weight for easy, one-person operation
- Automatically senses and displays supply or return flows, saving time on the job
- Back pressure compensation ensures accurate readings
- Multiple hood sizes available for easy, cost effective use across multiple jobs
- Detachable digital micromanometer offers flexibility to use in multiple applications

#### Applications

- HVAC commissioning
- Cleanroom certification
- Troubleshooting HVAC systems
- Testing and balancing HVAC systems

#### Inclusions

- 610x610mm hood
- 18"/46cm pitot
- Static pressure tips
- Tubing
- Software
- Calibration certificate



## OPTIONAL ACCESSORIES:

### PITOT TUBES

Long lasting stainless steel construction, fully meets AMCA & ASHRAE specifications.



- TSI 634634001 Static Pitot tube 5/16" (8 mm) diameter, 18" (46 cm) length
- TSI 634634002 Static Pitot tube 5/16" (8 mm) diameter, 24" (61 cm) length
- TSI 634634004 Telescoping Pitot tube 8" to 38" (20cm to 96cm) length

### HOOD EXPANSION KITS

Additional hood sizes fit interchangeably on the instrument base to increase flexibility.

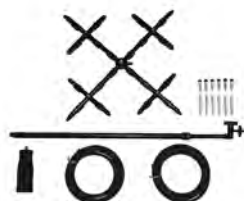


- TSI 801206 Hood Expansion Kit 1ft x 4ft (305mm x 1220mm) and 2ft x 4ft (610mm x 1220mm)
- TSI 801207 Hood Expansion Kit 1ft x 5ft (305mm x 1525mm) and 3ft x 3ft (915mm x 915mm)

### AIR VELOCITY MATRIX

Obtain area-averaged multi-point air velocity measurements.

- TSI 801090 16 POINT VELOCITY MATRIX Velocity matrix, telescopic handle, (2) 8' hoses, standoff stoppers



### CAPTURE HOOD STAND

Take readings from ceiling diffuser without needing to use a ladder.



- TSI CH-STAND Capture Hood Stand Extends up to 15ft, wheels for ease of movement and portability

A manometer is a differential pressure measuring device. It can be used with any standard pitot tube to measure static pressure, velocity, or volume. A digital micro manometer can be used in any position and does not require levelling. However, it should be zeroed periodically throughout a workday.

## TSI 5825 DP-CALC MICROMANOMETER

The 5825 allows you to easily make HVAC pressure measurements. This robust instrument can be used with pitot probes to measure duct velocity.

### Features

- Measure differential and static pressure from -15 to +15 in. H<sub>2</sub>O (-3735 to +3735 Pa)
- Calculate and display velocity when using a Pitot tube
- Variable time constant
- Statistics
- Data logging with time and date stamp
- Stores 12,700+ samples and 100 test IDs
- Programmable K factors

### Applications

- HVAC commissioning and troubleshooting
- Testing and balancing
- Pitot tube duct traverses
- Static pressure measurements
- Pressure drop across filters, coils, fans, and diffusers
- Environmental air flow testing



## OPTIONAL ACCESSORIES:

### PITOT TUBES

Long lasting stainless steel construction, fully meets AMCA & ASHRAE specifications.



- TSI 634634001 Static Pitot tube  
5/16" (8 mm) diameter, 18" (46 cm) length
- TSI 634634002 Static Pitot tube  
5/16" (8 mm) diameter, 24" (61 cm) length
- TSI 634634004 Telescoping Pitot tube  
8" to 38" (20cm to 96cm) length

## ANEMOMETERS

Anemometers are very useful for measuring face velocities and velocity from supply ducts, with averaging capabilities for flow areas. Additional capabilities in temperature measurement, flow rate calculation, averaging and determining minimum and maximum readings make these instruments ideally suited for measuring unevenly distributed or fluctuating flows through heating and cooling coils, diffusers, grilles, and filters.

### TSI 5725 VELOCICALC ROTATING VANE ANEMOMETER

The 5725 is a high performance, yet simple-to-use, rotating vane anemometer. High accuracy and reliability make the 5725 the professional's ideal tool for measuring unevenly distributed or fluctuating flows through heating and cooling coils, diffusers, grilles, and filters.

#### Features

- Reversible 100mm head to read supply and exhaust flows
- Sampling function records multiple point measurements
- Automatic averaging of air velocity
- Simultaneously displays velocity and temperature
- Sweep mode for one overall measurement

#### Applications

- Heating and cooling coil analysis
- Diffuser and grille measurements
- Fume hood face velocity tests
- Indoor air quality tests
- Filter face velocity measurements

### OPTIONAL ACCESSORIES:



#### TSI 801749 AIR CONE KIT

- Includes a 285 x 234mm rectangular cone and 180mm diameter round cone
- Works with any 100mm vane anemometer
- Rugged and reliable, easy to transport
- Ideal for toilet exhaust fans and small outlets



## TSI 9565 VELOCICALC MULTI-FUNCTION VENTILATION METER

The portable, handheld 9565 is a multi-purpose anemometer unit which can be used for a variety of airflow and IAQ measurements with the addition of the right probe.

### Features

- Interchangeable probes
- Compatible with all pitot tubes on the market
- 26,500 point advanced data logging (manual & automatic) with USB cable and software
- Toggle between actual and standard velocity
- Advanced menu driven multi-mode display
- Bluetooth bidirectional communications
- Remote polling from a PC



## OPTIONAL ACCESSORIES:

### PITOT TUBES

Long lasting stainless steel construction, fully meets AMCA & ASHRAE specifications.



- TSI 634634001 Static Pitot tube  
5/16" (8 mm) diameter, 18" (46 cm) length
- TSI 634634002 Static Pitot tube  
5/16" (8 mm) diameter, 24" (61 cm) length
- TSI 634634004 Telescoping Pitot tube  
8" to 38" (20cm to 96cm) length

### PROBES

Get the measurements you need with these TSI probes available for rent:



A

B

- A - TSI 964 Thermoanemometer Straight Probe  
Air velocity, temperature and relative humidity
- B - TSI 982 IAQ Probe  
CO, CO2, temperature and relative humidity

# FIT TESTING

## REAL-TIME QUANTITATIVE RESPIRATOR FIT TESTERS

Personal protective equipment is an important barrier between the wearer and potentially harmful substances or stimuli, and ensuring a proper fit is imperative to provide the user the safest level of protection. Kenelec Scientific provides real-time quantitative respirator fit testing instruments capable of testing the fit of all types of face masks. Under Australian and NZ Standards, everyone using a mask in any workplace should be fit tested before starting, and at least annually thereafter. Without an enforced and documented fit testing program, your organisation could be found legally liable as an unsafe workplace.

### TSI 8048 PORTACOUNT PRO+ RESPIRATOR FIT TESTER\*

Only the 8048 provides one consistent and objective testing experience across all respirator types, including all N95 filtering face pieces using N95-Companion™ technology. New features like FitCheck™ Mode and animated fit test steps now help users achieve a better fit for respirator wearers more quickly\*.

#### Features

- Compatible with new Modified CNC Protocols
- OSHA, CSA, HSE, INRS and ANSI compliant for all tight-fitting respirators, including series 95, 99, 100, FFP1, FFP2 and FFP3 filtering facepiece respirators
- Built-in N95 Companion™ technology
- Real-Time FitCheck Mode™ shows respirator fit in real-time for improved mask selection and training
- Animated fit test steps guide users through the proper movements for each exercise



*\*Note - screen not included, own tablet/PC must be used; FitPro Ultra Fit Test Software must be installed - please refer to our website for minimum hardware requirements.*

### TSI 8038 PORTACOUNT PRO+ RESPIRATOR FIT TESTER

Quantitative fit testing using the 8038 is the easy way to reliably fit test any tight-fitting respirators. Eliminate the guesswork associated with tedious and error-prone qualitative fit test methods and let your fit testing programme be guided by science.

#### Features

- Fit test ANY tight-fitting respirator including N95, P2 and P1 disposable respirators
- Includes 8026 Particle Generator with the 8038 system
- Greater simplicity with the built-in N95 Companion™ technology
- Standalone operation – no external computer required
- Use with your external computer to generate reports & print fit test cards



# KENELEC SCIENTIFIC

## Our company:

Established in 1962, Kenelec Scientific is one of Australia's leading scientific and environmental technology companies. Based in Melbourne, with distributors located throughout Australia and New Zealand, we are industry leaders in the supply of globally sourced, latest generation technologies at competitive prices.

## Our services:

### Sales

Buy the latest equipment from some of the most trusted brands in the industry.

### Rental

Short and long term hire available on an extensive range of instruments.

### Calibration

Professional calibration of your instruments in our state-of-the-art laboratories.

### Validation

Wide range of validation services to ensure compliance with regulations.

### Service & Repairs

Local after-sales service and support from our experienced technicians.

### Education

Product education and support available in-house, onsite or online.

### Financing

Secure your equipment without relying on up-front capital funding.

## Looking to buy?

If you are in need of a long-term solution, most of the products featured in this catalogue are also available for purchase. With hundreds of products available off-the-shelf, as well as many custom-designed systems under our belts we're sure to have a solution for your test and measurement needs.

### TSI AM520 Personal Monitor

Real-time mass concentration measurement and data analysis



### TSI 8533 DustTrak DRX Desktop Aerosol Monitor

Real-time readings

### TSI 8048 PortaCount™ Respirator Fit Tester

Real-time quantitative respirator fit testing



## Want more information?

For more products and solutions, visit our website:  
[www.kenelec.com.au](http://www.kenelec.com.au)

We look forward to working with you.



FS 605267

Kenelec Scientific Pty Ltd | ABN 88 064 373 717  
Unit 4-5, 18-20 Redland Drive, Mitcham VIC 3132  
p 1300 73 22 33 | e [rental@kenelec.com.au](mailto:rental@kenelec.com.au) | w [www.kenelec.com.au](http://www.kenelec.com.au)

KS CATALOGUE | RENTAL | MAR26

