



TSI + QUEST
OUR FOCUS
IS ON YOU

TSI | **QUEST™**

Your Safety.
Your Employees.
Your Productivity.
Your Measurements.



OUR FOCUS IS ON YOU


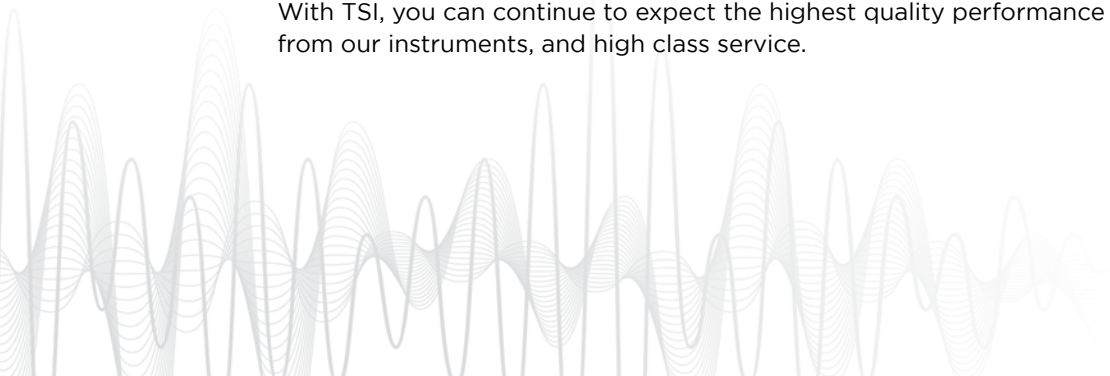


**YOUR SAFETY.
YOUR EMPLOYEES.
YOUR PRODUCTIVITY.
YOUR MEASUREMENTS.**

TSI is proud to expand its portfolio with industry leading instrumentation from Quest™.

- + Personal Noise Dosimeters
- + Sound Level Meters
- + Heat Stress Monitors
- + Indoor Air Quality/
Particulate Monitors

With TSI, you can continue to expect the highest quality performance from our instruments, and high class service.





PERSONAL NOISE MEASUREMENT THAT DOESN'T WEIGH YOU DOWN

PERSONAL NOISE DOSIMETERS

TSI Quest Edge Personal Noise Dosimeters are comfortable, compact dosimeters that easily mount to your shoulder. Choose from multiple dosimeter offerings that can simultaneously measure against separate industry standards, all in one compact unit.

TAKE YOUR DOSIMETRY MEASUREMENTS TO THE NEXT LEVEL

Designed for dosimetry, the TSI Quest Detection Management Software (DMS) helps safety and occupational professionals:

- + Configure instrumentation and save pre-configured setups
- + Retrieve, download, share, and save instrument data
- + Create charts, tables, and reports to intuitively interpret your measurements
- + Export and share recorded results

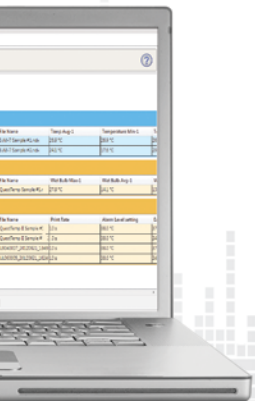


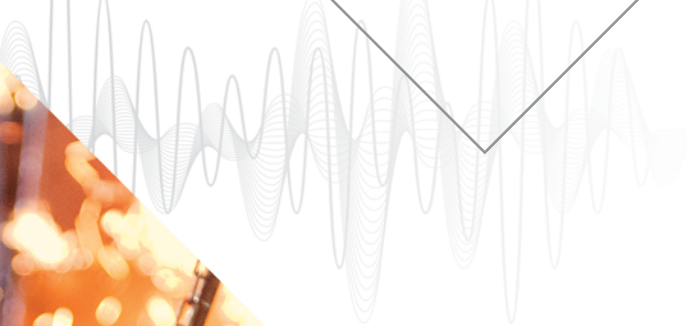
ENVIRONMENTAL AND OCCUPATIONAL NOISE MEASUREMENT

TSI Quest offers a complete line of Sound Level Meters to meet your needs. SoundPro™ Sound Level Meters, Sound Examiner Sound Level Meters and Sound Detection SD-200 instruments provide advanced sound level monitoring and comprehensive data analysis.

These accurate, user-friendly sound level meters are ideal for applications including:

- + Occupational Noise Evaluations
- + Environmental Noise Assessments
- + Noise Ordinance Enforcement and Legal Metrology
- + General Sound and Frequency Analysis
- + Building Acoustics
- + Mobile Equipment Evaluations





PROVEN SOLUTIONS FOR HEAT STRESS MANAGEMENT

Heat stress management is often viewed as time-consuming and complex. Simplify your heat stress management with the intuitive QUESTemp° Series Heat Stress Monitors.

The QUESTemp° Heat Stress Monitors are designed to quickly and accurately evaluate potential heat stress environments. These instruments deliver high-performance monitoring using Wet Bulb Globe Temperature (WBGT) sensing technology and the calculation of a WBGT Index value.

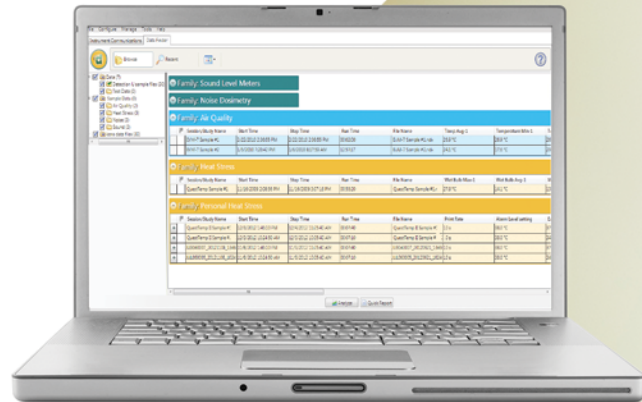
SIMULTANEOUSLY MEASURE PARTICULATE AND GAS CONCENTRATION

The TSI Quest EVM Environmental Monitors simultaneously measure particulates and gas concentration in real-time. These monitors can measure particles, select toxic gases, volatile organic compounds (VOCs), relative humidity, temperature and air velocity.

SINGLE SOFTWARE SOLUTION FOR REPORTING AND ANALYSIS

The Detection Management Software program works with various TSI Quest data logging instruments that allows for recording, reporting, charting and analyzing exposures to a variety of occupational and environmental hazards.

- + Noise dosimetry
- + Octave band sound analysis/survey
- + Area and personal heat stress monitoring
- + Integrating sound level meter
- + Industrial and community sound surveys
- + Indoor air quality (IAQ) assessment
- + Thermal comfort monitoring



Visit us at
tsi.com/quest



TSI Incorporated - Visit our website www.tsi.com for more information.

USA Tel: +1 800 874 2811
UK Tel: +44 149 4 459200
France Tel: +33 1 41 19 21 99
Germany Tel: +49 241 523030

India Tel: +91 80 67877200
China Tel: +86 10 8219 7688
Singapore Tel: +65 6595 6388



Distributed by:
 Kenelec Scientific Pty Ltd
 1300 73 22 33
sales@kenelec.com.au
www.kenelec.com.au