

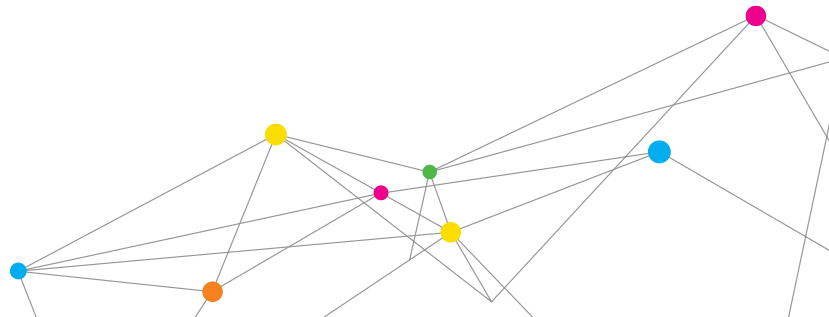
# ACOUSTICAL AC-300 CALIBRATOR



The Acoustical AC-300 Calibrator is specifically designed for field calibration of Quest sound level meters and noise dosimeters across a wide range of temperature, humidity and pressure conditions.

## Features and Benefits

- + Produces two signals, 250 Hz or 1,000 Hz at a sound pressure level of 114 dB
- + Simply insert the microphone of your instrument, select the correct signal from the one-button keypad, and calibrate
- + Conforms to the requirements of IEC 60942 (2003-01) for sound calibrators and ANSI S1.40-2006 (R2011); specifications and verification procedures for sound level meters



# SPECIFICATIONS

## ACOUSTICAL AC-300 CALIBRATOR

Size	3.9" (L) x 2.3" (W) x 1.8" (D) / 10 cm (L) x 5.8 cm (W) x 4.6 cm (D)
Weight	6 oz (0.17 kg)
Battery	1 x 9v alkaline battery (ANSI/NEDA 1604A, IEC 6LR61) Approx. 18 hours (@ 1 kHz)

### Conformance to Standards

ANSI S1.40-2006 (R2011)	Specifications and Verification Procedures for Sound Calibrators
IEC 60942 (2003)	Electroacoustics, Sound Calibrator/Class 1
CE, RoHS, WEEE, C-Tick	

### Outputs

Frequency	250 Hz and 1,000 Hz, +/- 0.5% with expanded uncertainty in environmental conditions
Sound Pressure Level	114.0 dB re 20µPa (1 Pa = 1 N/m <sup>2</sup> )

### Operating Environmental Conditions

Temperature Range	14°F to 122°F (-10°C to 50°C)
Pressure Range	65kPa to 108kPa (19 to 32 inches of Hg) Approximate 11,500 ft to -2,000 ft elevation relative to sea level (3,500 m to -600 m)
Relative Humidity Range	10% to 90%, non-condensing

### Storage Environmental Conditions

Temperature Range	-4°F to 149°F (-20°C to 65°C) with battery removed
Storage Humidity Range	0% to 90%, non-condensing

Specifications are subject to change without notice.

Quest is a trademark, and TSI and the TSI logo are registered trademarks of TSI Incorporated.



### Conforms to standards

- + Enables confident use in a wide range of applications and conditions
- + Meets the requirements of IEC 60942 (2003) for sound calibrators and ANSI S1.40-2006 (R2011) for sound calibrators

### One-button simplicity

- + Single On/Off/Function key assures ease of use
- + Makes calibrations fast and trouble-free

### Designed for efficient operation

- + Low battery icon indicates when replacement is needed, to help prevent service interruption
- + Auto-OFF function powers down 4 minutes after last key press, reducing power drain and maximizing battery life (approximately 18 hours)



TSI Incorporated - Visit our website [www.tsi.com](http://www.tsi.com) for more information.

<b>USA</b>	<b>Tel:</b> +1 800 874 2811	<b>India</b>	<b>Tel:</b> +91 80 67877200
<b>UK</b>	<b>Tel:</b> +44 149 4 459200	<b>China</b>	<b>Tel:</b> +86 10 8219 7688
<b>France</b>	<b>Tel:</b> +33 1 41 19 21 99	<b>Singapore</b>	<b>Tel:</b> +65 6595 6388
<b>Germany</b>	<b>Tel:</b> +49 241 523030		



Distributed by:  
Kenelec Scientific Pty Ltd  
1300 73 22 33  
[sales@kenelec.com.au](mailto:sales@kenelec.com.au)  
[www.kenelec.com.au](http://www.kenelec.com.au)