

# Lab Charge Analyzer

# LCA<sup>5</sup>



The Chemtrac Lab Charge Analyzer model LCA5.1, is the latest generation charge analyzer designed for a range of industrial uses including paper, tissue, and board applications. The LCA5.1 measures the charge of dissolved and colloidal substances in wet end samples using polyelectrolyte titrations, which can be expressed in either microequivalents per liter ( $\mu\text{eq/L}$ ) or parts per million (ppm). By optimizing wet end chemistry, the LCA5.1 helps improve performance and quality, allowing you to monitor and stabilize variations in charge for better process runnability and product quality.

Our standard model allows for manual titrations, and we also offer automatic-titration models with either one or two-pump configurations. Backed with four decades of charge analysis expertise and world-class customer support, the LCA5.1 is the ultimate solution for your charge analysis needs. Let the LCA5.1 help you achieve your papermaking goals with accurate and reliable charge measurements.

## Standard Features

- 7-inch touchscreen display with intuitive user interface
- On-screen video tutorials
- Accommodates 10 to 40 mL sample size
- Data logging with easy download to USB flash drive
- Real-time titration curves
- Advanced signal diagnostics with unique Signal Health readout and waveform view
- Quick disconnect probe and piston
- Includes 300 micron strainer, 400 mL beaker, and 30 mL syringe

## Optional Features

- Automatic titration with single or dual titrant pumps
- Rollaway case for transporting unit



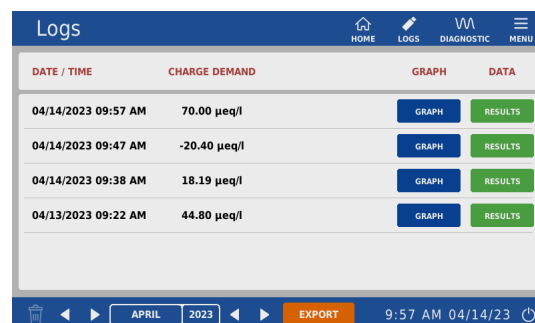
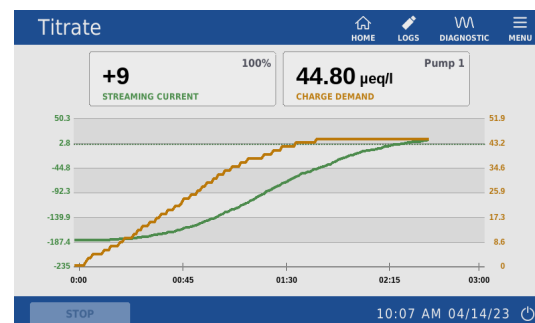
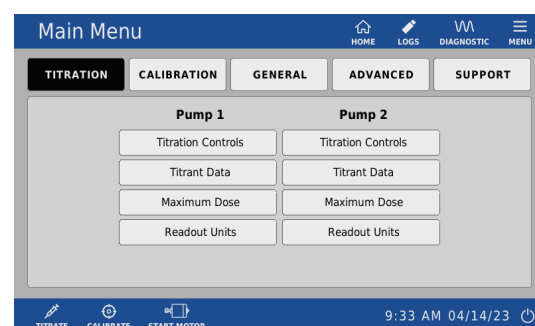
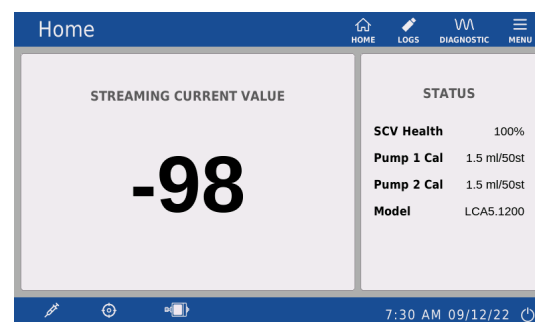
## General Specifications

Display:	7" capacitive touchscreen, WVGA 800 x 480
Sensor:	Streaming Current, quick-connect
Sensor Wetted Materials:	Delrin, 316 stainless steel
Sample Volume:	10 - 40 mL
Measurements:	SCV (Streaming Current Value) with Optional Auto Titration: Anionic and Cationic Demand (ml, µeq/L)
Auto Titration Pumps*:	Solenoid operated micro-pump with 20 µL dispense volume (used with dilute chemicals)  Material of construction: Delrin, PTFE, FKM, EPM
Data Storage:	Internal memory with capacity for 100,000 measurements; results stored by month & year
Data Log Output:	Image file (.png) of each Titration and CSV file with results plus settings used for each titration; downloadable to USB Flash Drive
Titration Bottles*:	HDPE with polypropylene bottles
Power Adapter:	Input: 100-240 VAC, 50-60 Hz, 1A Max Output: 24.0 VDC, 1.5A, 36.0 W
Operating Temperature:	45° - 105° F (7° - 41° C)
Enclosure:	Powder Coated Aluminum
Dimensions:	8" W x 9" D x 15" H 203 mm W x 229 mm D x 381 mm H
Weight:	15 lbs (6.8 kg)

\* Optional items must be specified at time of ordering.

## AVAILABLE MODELS

LCA5.10	Standard model; manual titration
LCA5.11	Automatic titration; single titrant pump
LCA5.12	Automatic titration; dual titrant pumps (cationic and anionic)



Distributed by:  
Kenelec Scientific Pty Ltd  
1300 73 22 33  
sales@kenelec.com.au  
www.kenelec.com.au