

FIT TEST PROBE KIT INSTRUCTIONS

TSI MODEL 8025-N95



In order to perform a quantitative fit test the PortaCount® Respirator Fit Tester must draw an air sample from inside the respirator while it is being worn by the person being fit tested. Use the PortaPunch™ Probe Insertion Tool, sampling probes, and push nuts contained in this kit to install a sampling port onto any disposable filtering-facepiece respirator.

WARNING

Once a sampling probe is installed the respirator can no longer be used for respiratory protection. Ported respirators are for quantitative fit testing only. Discard (or sanitize) the respirator after each fit test is completed. (Follow the respirator manufacturer's recommendations.)

Contents of 8025-N95 Probe Kit:

| Qty | Description |
|-----|---------------------------------|
| 1 | PortaPunch Probe Insertion Tool |
| 500 | *Sampling Probes |
| 500 | *Push Nuts |

*Reorder the 8025-N95R Refill Kit for an additional 500 sampling probes and 500 push nuts (PortaPunch tool not included).



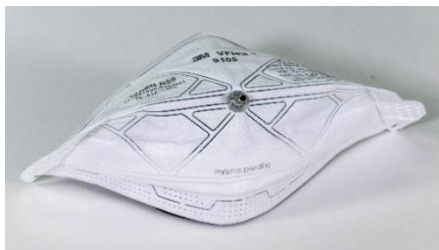
Push Nut
(material and color may vary)



Sample Probe
(material and color may vary)

Step 1: Choose a location to install the sample probe.

For proper fit testing, the sampling point must be in the "breathing zone" of the respirator user. For most respirators, this is in the center of the respirator between the person's nose and mouth.



**Works with any
disposable respirator!**



For Flat “Duckbill” Style Respirators—install the probe near the outer edge of the **bottom panel** where it cannot be blocked by the person’s chin.

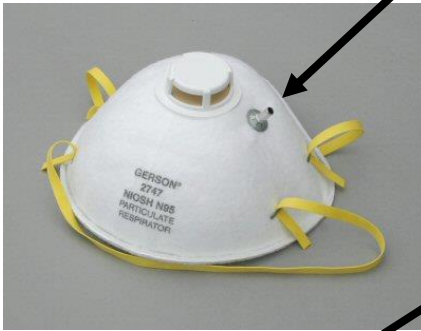


Bottom panel shown

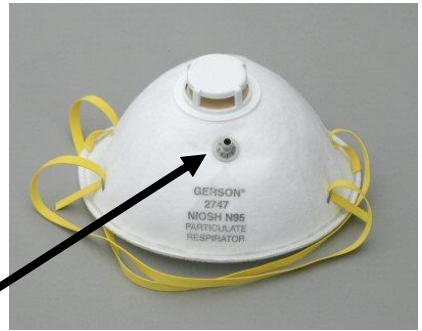


For Respirators with Center-Mounted Exhalation Valves—install the probe to the left or right of the valve. **DO NOT** install the probe above or below the valve because this risks having the probe blocked by the person’s nose or chin.

Correct probe location to left (or right) of valve



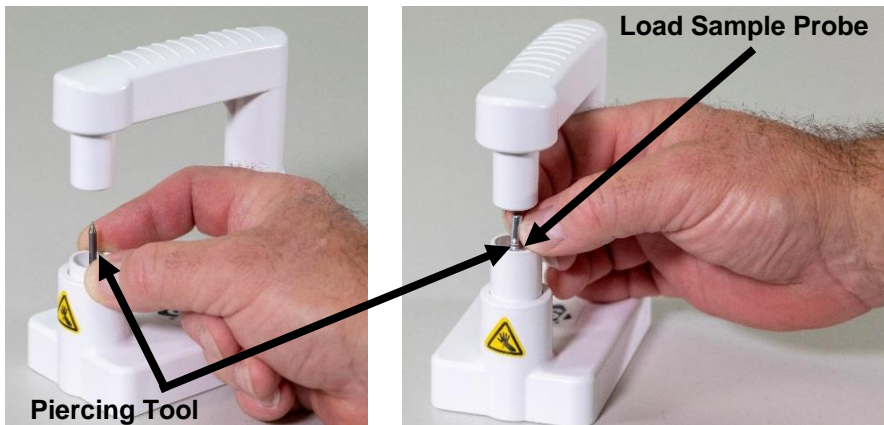
Wrong probe location below (or above) valve



For Respirators with an Outer Mesh—install the probe normally as if the mesh was not present. The sampling probe and push nut will seal properly right through the mesh.

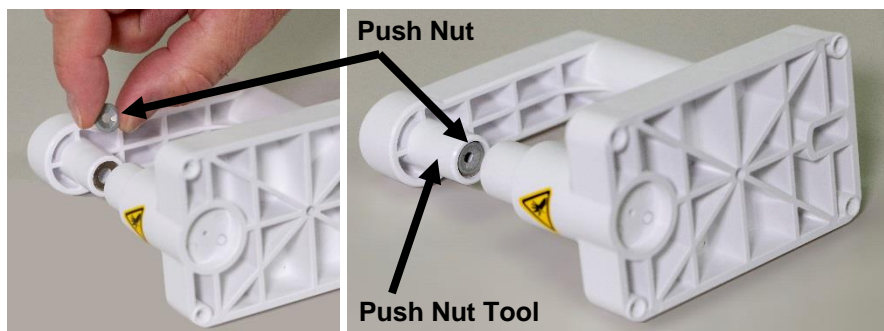


Step 2: Load a sample probe onto the PortaPunch piercing tool.

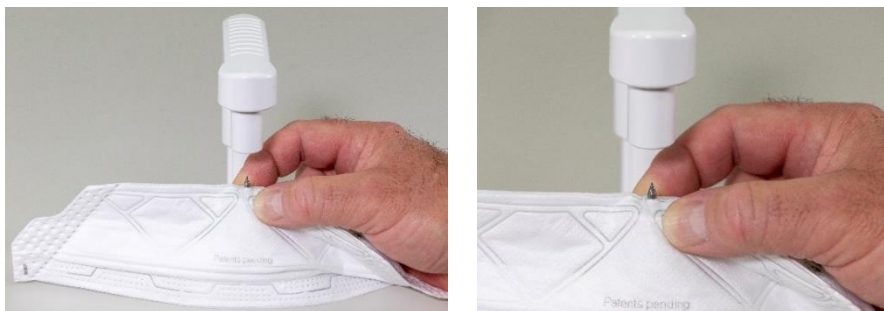


Step 3: Load a push nut onto the magnetic push nut tool on the PortaPunch tool.

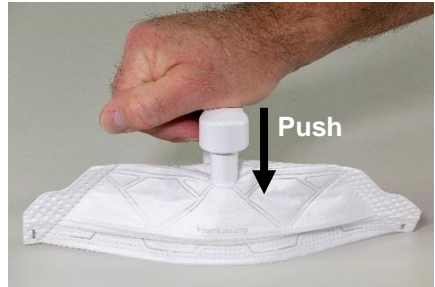
MAKE SURE THE CONCAVE SIDE OF THE PUSH NUT IS FACING UP.



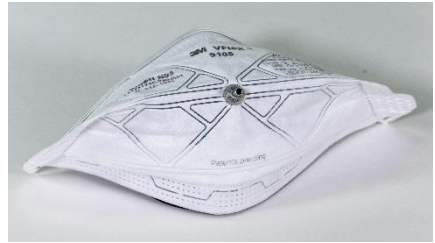
Step 4: Use the PortaPunch Probe Insertion Tool (with probe loaded) to puncture the respirator **from the inside**. It is not necessary to push the probe all the way through. All you need to do is get the point through far enough to be seen from the other side.



Step 5: Next, press down on the PortaPunch lever arm to engage the push nut onto the exposed point poking through the respirator and firmly push them together as far as possible.



Step 6: Release the PortaPunch lever arm and remove the respirator and inspect the sample port to make sure it is tightly secured and will not leak. You should not be able to rotate the probe with your fingers. If necessary, use the PortaPunch Probe Insertion Tool again to tighten the port.



The respirator is now ready for fit testing.



Distributed by:
Kenelec Scientific Pty Ltd
1300 73 22 33
sales@kenelec.com.au
www.kenelec.com.au

TSI, TSI logo, and PortaCount are registered trademarks of TSI Incorporated.
PortaPunch is a trademark of TSI Incorporated.



TSI Incorporated – Visit our website www.tsi.com for more information.

USA Tel: +1 800 680 1220
UK Tel: +44 149 4 459200
France Tel: +33 1 41 19 21 99
Germany Tel: +49 241 523030

India Tel: +91 80 67877200
China Tel: +86 10 8219 7688
Singapore Tel: +65 6595 6388

