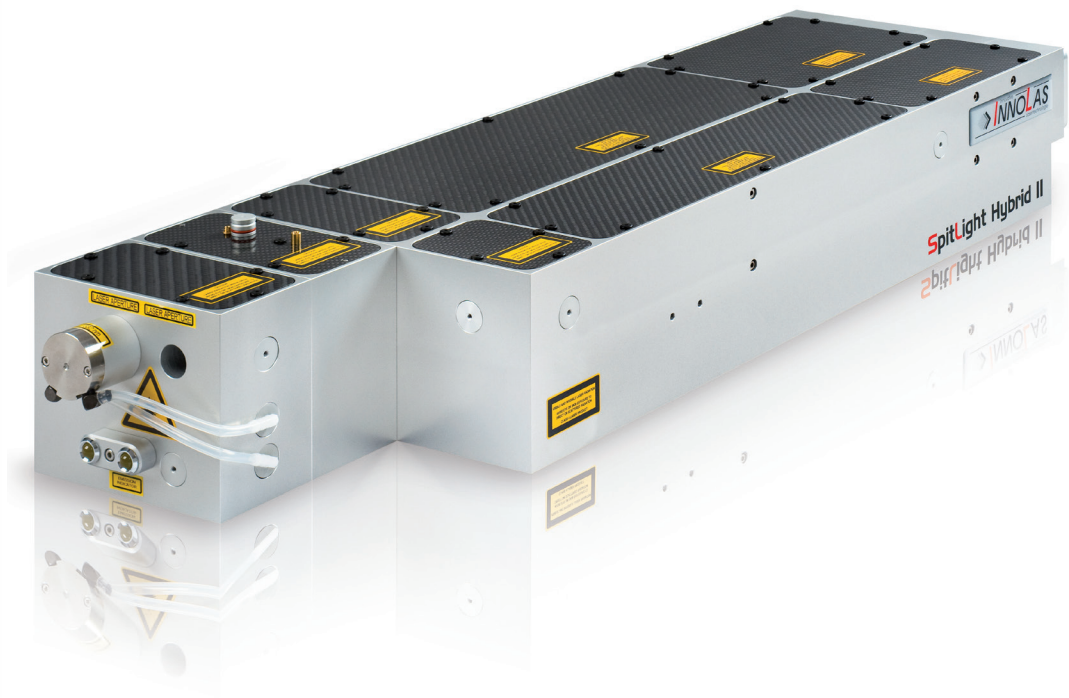


SpitLight Hybrid

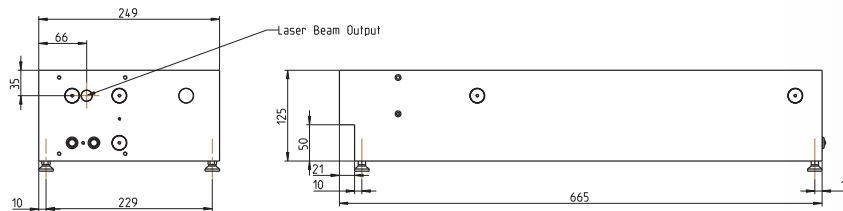


Features

- * Compact laser head and power supply with small footprint
- * Robust and stable resonator structure
- * Quick and easy change of flashlamps
- * Maintenance-free pumping chamber with ceramic reflector
- * Excellent beam quality and pointing stability
- * Long flashlamp lifetime
- * Double pulse option available
- * System can be injection seeded (SLM-Option)

SpitLight Hybrid

| Model | | SpitLight Hybrid I | SpitLight Hybrid II | SpitLight Hybrid III |
|----------------------|--------------------------------------|---|---|---|
| Laser Parameters | Repetition Rate | Product available from 1 to 200 Hz (Following specifications are for 50 Hz) | | |
| Energy | Pulse Energy at 1,064 nm | > 250 mJ | > 450 mJ | > 800 mJ |
| | Pulse Energy at 532 nm | > 125 mJ | > 250 mJ | > 350 mJ |
| | Pulse Energy at 355 nm | > 70 mJ | > 125 mJ | > 250 mJ |
| | Pulse Energy at 266 nm | > 40 mJ | > 70 mJ | > 100 mJ |
| | Pulse Energy at 213 nm | > 6 mJ | > 10 mJ | > 15 mJ |
| | Energy Stability at 1,064 nm (RMS) | < 1.0% | < 1.0% | < 2.0% |
| | Energy Stability at 532 nm (RMS) | < 2.0% | < 2.0% | < 3.5% |
| | Energy Stability at 355 nm (RMS) | < 2.5% | < 2.5% | < 5.0% |
| Beam Parameters | Pulse Width at 1,064 nm | 10-12 ns | 10-12 ns | 8-10 ns |
| | Divergence | < 0.5 mrad | < 0.5 mrad | < 0.5 mrad |
| | Pointing Stability | < ± 50 µrad | < ± 50 µrad | < ± 50 µrad |
| | Beam Diameter | 6 mm | 6 mm | 7 mm |
| | Temporal Jitter | < ± 1 ns | < ± 1 ns | < ± 1 ns |
| Operating Parameters | Lamp Lifetime | > 20,000,000 shots | > 20,000,000 shots | > 20,000,000 shots |
| | Diode Lifetime | 2 years/2 billion shots* | 2 years/2 billion shots* | 2 years/2 billion shots* |
| | Electrical Supply | 208/400 VAC (3 phase), 50/60 Hz, 5.0 kW | 208/400 VAC (3 phase), 50/60 Hz, 5.0 kW | 208/400 VAC (3 phase), 50/60 Hz, 5.0 kW |
| | Cooling Water | 8 l/min; 2-6 bar; < 15 °C | 8 l/min; 2-6 bar; < 15 °C | 8 l/min; 2-6 bar; < 15 °C |
| Weights | Laser Head | 25 kg | 25 kg | 25 kg |
| | Power Supply | 50 kg | 50 kg | 50 kg |
| Dimensions | Laser Head (in infrared) (L x W x H) | 665 x 250 x 125 mm | 665 x 250 x 125 mm | 665 x 250 x 125 mm |
| | Power Supply (L x W x H) | 560 x 400 x 425 mm | 560 x 400 x 425 mm | 560 x 400 x 425 mm |



InnoLas follows a policy of continuous product improvement. All specifications are subject to change without notice. All specifications at 1,064 nm unless otherwise noted. * 2 years after installation or 2 billion shots – whichever comes first

InnoLas Laser GmbH is DIN EN ISO 9001 certified.



InnoLas Laser GmbH | Justus-von-Liebig-Ring 8 | 82152 Krailling | Germany
 Phone: +49 (89) 899 360 - 1400 | Fax: +49 (89) 899 360 - 1499
 E-mail: info@innolas-laser.com | Homepage: www.innolas-laser.com

