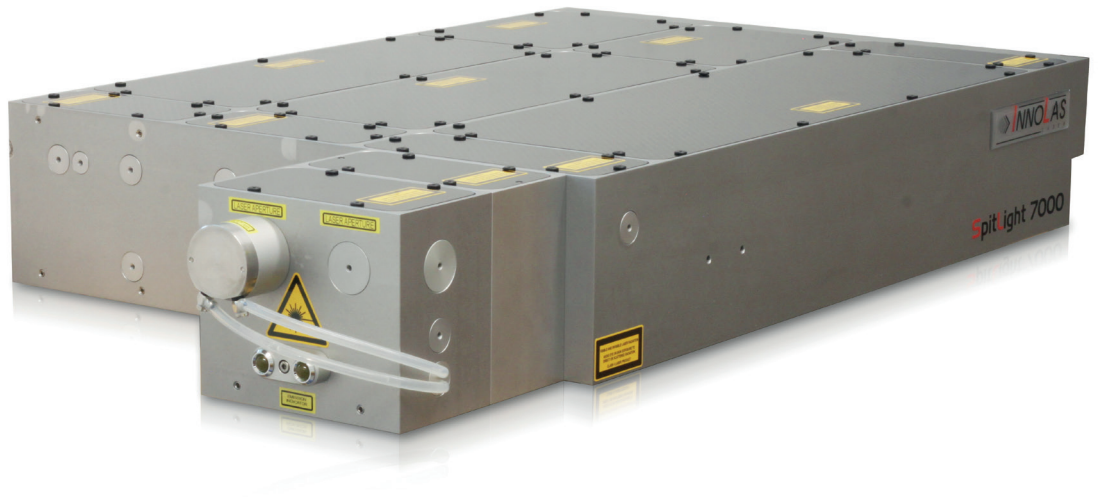


# SpitLight

Scientific Lasers

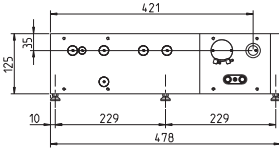
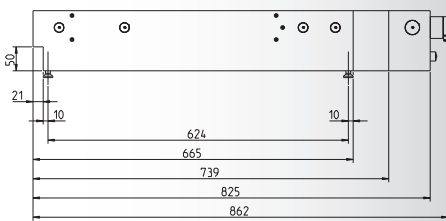
## SpitLight 7000



### Features

- \* Established and reliable laser base with extremely compact design
- \* Well-proven Power Supply and Software
- \* Small Footprint (~ 60% smaller than comparable products)
- \* Excellent Short and Long Term Stability
- \* Quick and easy replacement of Flashlamps
- \* System can be Injection Seeded for Single Longitudinal Mode operation

# SpitLight 7000

Model	SpitLight 7000
Repetition rate	Specifications @ 3 Hz (available up to 10 Hz)
<b>Pulse Energy [mJ]</b>	
Pulse Energy @ 1064 nm	> 7 J
Pulse Energy @ 532 nm	> 4 J
Pulse Energy @ 355 nm	> 2 J
Pulse Energy @ 266 nm	> 0.6 J
<b>Energy Stability</b>	
Energy Stability @ 1064 nm (RMS)	< 0.8%
Energy Stability @ 532 nm (RMS)	< 1.3%
Energy Stability @ 355 nm (RMS)	< 2.0%
<b>Beam Parameters</b>	
Pulse Width	6-10 ns
Divergence	< 5 mrad
Pointing Stability	< 40 $\mu$ rad
Beam Diameter	~ 16 mm
<b>Operating Parameters</b>	
Cooling Water	8 l/min, 2-6 bar, < 15° C
<b>Weights and Dimensions</b>	
Dimensions Laser Head (L x W x H)	665 x 478 x 125 mm
	 

InnoLas follows a policy of continuous product improvement. All specifications are subject to change without notice.

InnoLas Laser GmbH is DIN EN ISO 9001 certified.

**InnoLas Laser GmbH** | Justus-von-Liebig-Ring 8 | 82152 Krailling | Germany  
Phone: +49 (89) 899 360 - 1400 | Fax: +49 (89) 899 360 - 1499  
E-mail: [info@innolas-laser.com](mailto:info@innolas-laser.com) | Homepage: [www.innolas-laser.com](http://www.innolas-laser.com)

© InnoLas Laser GmbH 2019

