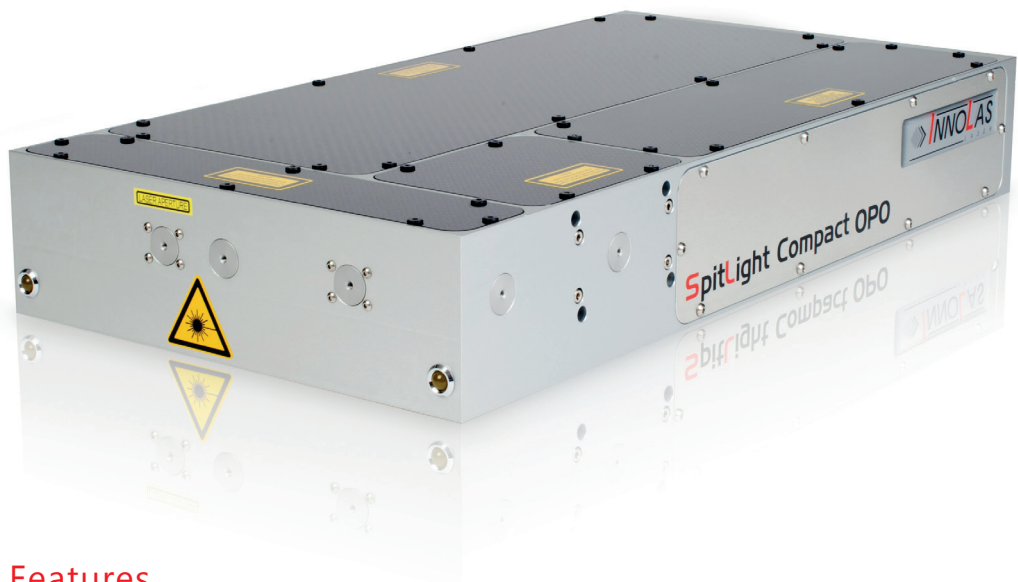


SpitLight Compact 200 and 400 OPO

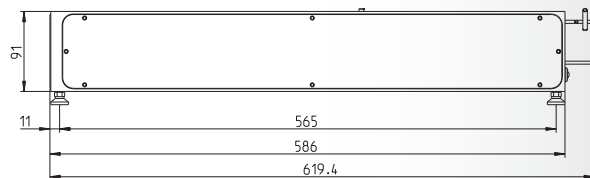
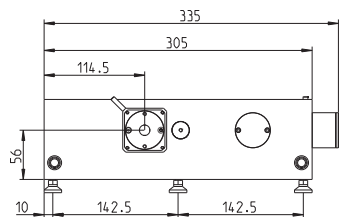


Features

- * Pulse to pulse wavelength tunable OPOs ranging from 410 to 2500 nm and repetition rates up to 20 Hz
- * High pulse energy in combination with high repetition rates in each spectral region resulting from diode-pumped Nd:YAG laser at 355 nm or 532 nm
- * Stable mechanical and optical setup in a compact monolithic housing containing both laser and OPO
- * Spitlight GUI software including wavelength calibration to control the whole device
- * Remote client interface over TCP/IP for easy software integration
- * Many integrated options available like energy monitor, spectrometer, automatic wavelength calibration, fiber coupling, fast attenuation or UV generation (210-410nm)

SpitLight Compact 200 and 400 OPO

Model	SpitLight Compact 200 OPO Broadband	SpitLight Compact 200 OPO Midband	SpitLight Compact 400 OPO Broadband	SpitLight Compact 400 OPO Midband
Pump Laser Parameters				
Repetition Rate	1-20 Hz (following specifications are for 10 Hz)	1-20 Hz (following specifications are for 10 Hz)	1-20 Hz (following specifications are for 10 Hz)	1-20 Hz (following specifications are for 10 Hz)
Energy @ 532nm	> 140 mJ	> 140 mJ	> 240 mJ	> 240 mJ
Energy @ 355nm	> 70 mJ	> 70 mJ	> 120 mJ	> 120 mJ
Beam Diameter	5 mm	5 mm	6.5 mm	6.5 mm
OPO				
Pulse Width	4-7 ns	4-7 ns	4-7 ns	4-7 ns
Tuning Range (532 nm pumped)	680-980 nm (signal) 1160-2400 nm (idler)	670-1090nm (signal) 1050-2500 nm (idler)	680-980nm (signal) 1160-2400 nm (idler)	670-1090nm (signal) 1050-2500 nm (idler)
Tuning Range (355 nm pumped)	410-690 nm (signal) 730-2500 nm (idler)	420-709 nm (signal) 709-2300 nm (idler)	410-690 nm (signal) 730-2500 nm (idler)	420-709 nm (signal) 709-2300 nm (idler)
Wavelength Shifting Time	< 50 ms (full span)	< 50ms (full span)	< 50ms (full span)	< 50ms (full span)
Line Width	10-450 cm ⁻¹	down to 5 cm ⁻¹	10-450 cm ⁻¹	down to 5 cm ⁻¹
Signal Output Energy @ 750 nm (532nm pumped)	> 40 mJ	> 30 mJ	> 60 mJ	> 50 mJ
Signal Output Energy @ 450 nm (355nm pumped)	> 18 mJ	> 16 mJ	> 30 mJ	> 27 mJ
Operating Parameters				
Lamp Lifetime	> 20 million shots		> 20 million shots	
Electrical Supply	208-240 VAC, 50/60 Hz, 1.5 kW		208-240 VAC, 50/60 Hz, 1.5 kW	
Cooling	Integrated*		Integrated*	
Weight				
Laser head	20 kg	20 kg	20 kg	20 kg
Power Supply/Chiller Unit	25 kg	25 kg	25 kg	25 kg
Dimensions				
Laser Head	560 x 305 x 91 mm	560 x 305 x 91 mm	586 x 305 x 91 mm	586 x 305 x 91 mm
Power Supply/Chiller Unit	480 x 220 x 480 mm	480 x 220 x 480 mm	480 x 220 x 480 mm	480 x 220 x 480 mm



InnoLas follows a policy of continuous product improvement. All specifications are subject to change without notice.

* Ask for details please

InnoLas Laser GmbH is DIN EN ISO 9001 certified.



InnoLas Laser GmbH | Justus-von-Liebig-Ring 8 | 82152 Krailling | Germany
Phone: +49 (89) 899 360 - 1400 | Fax: +49 (89) 899 360 - 1499
E-mail: OPO@innolas-laser.com | Homepage: www.innolas-laser.com



© InnoLas Laser GmbH 2017



Distributed by: Kenelec Scientific Pty Ltd | 1300 73 22 33 | sales@kenelec.com.au | www.kenelec.com.au