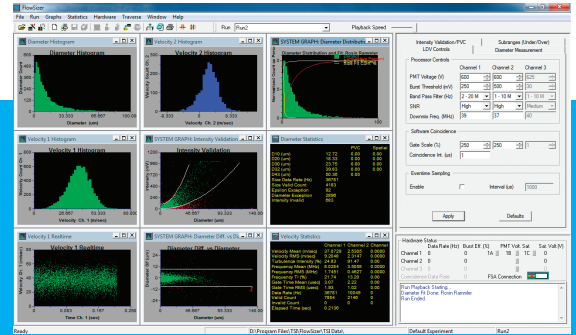


FLOWSIZER 4.0 SOFTWARE

MORE FLEXIBLE WITH MORE WAYS TO ANALYZE DATA

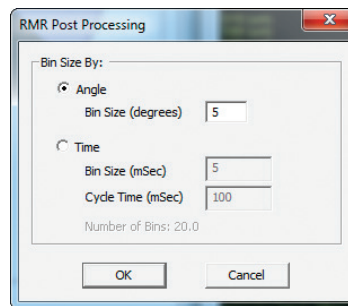
TSI's FlowSizer 4.0 Data Acquisition and Analysis Software package sets the standard for Windows® 64-bit based acquisition and analysis of LDV and PDPA data.



The FlowSizer software package is designed to be used with the Powersight Ar-ion laser-based LDV and PDPA systems. It supports all the FSA processors and PDM modules. It also has an easy-to-use interface, full-featured rotating machinery support, full traverse support, user-defined customizable graphics, user-defined statistics, power spectrum features, and data export. The FlowSizer 4.0 software provides all the features for the most accurate measurements of velocity and sizing of droplets.

Features

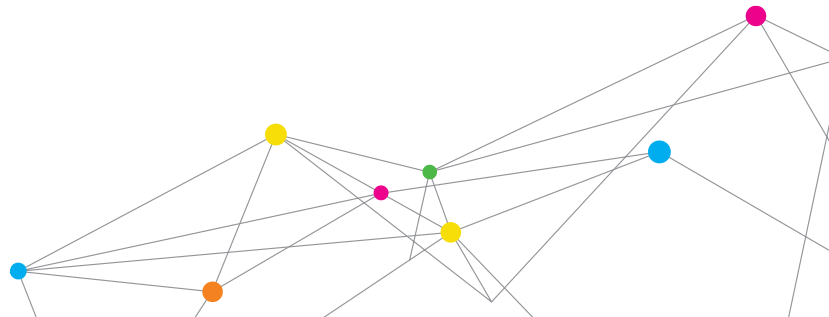
- + Phase averaging of mean and RMS velocities and mean and RMS diameters within a user-selectable angular interval
- + Auto-fill function for quickly applying offsets and window disable regions
- + User-selectable independent variable (time or angle-based).
- + Simple TTL-based reset signal triggers new cycle, particularly useful for pulsed sprays where testing is done away from the reciprocating engine



- + Dual-monitor set-ups now possible
- + Easy, two-click, menu-bar access to stored data
- + Probe volume correction (PVC) over a maximum of 3,000 diameter bins



UNDERSTANDING, ACCELERATED

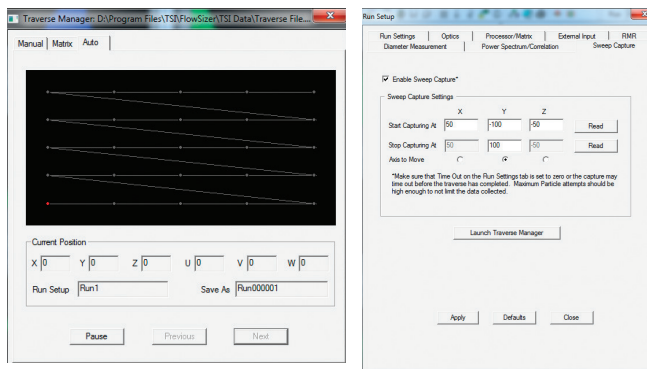


SPECIFICATIONS

FLOWSIZER 4.0 SOFTWARE

FlowSizer Traverse control even more feature packed

- + Current traverse position automatically updated after each event
- + Read position function easily switches between local and remote control modes
- + New capture mode performs “sweep captures” through sprays
- + FlowSizer software allows user entry of traverse position in manual mode
- + Plot label changes “remembered” to minimize formatting edits



FlowSizer Custom Graphics and Plots

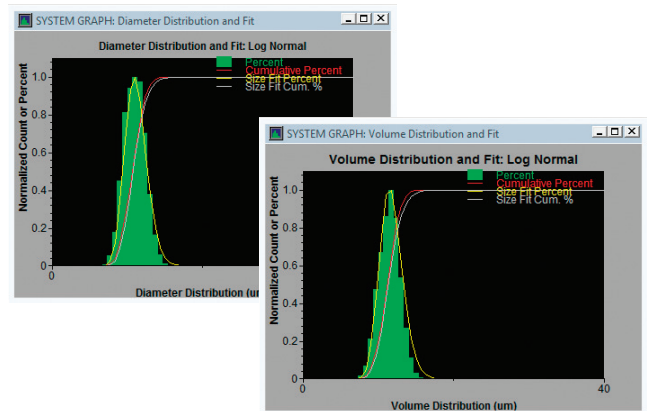
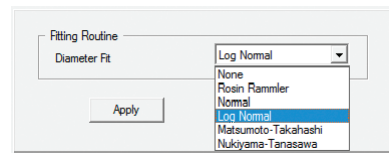
- + New diameter plots feature normal, modified log-normal, Matsumoto-Takahashi, and Nukiyama-Tanasawa fitting routines
- + Normalized count (probability), normalized volume, and cumulative distributions provided
- + Interarrival time now available for plot and ASCII export

FlowSizer ASCII Export Features

- + User-selectable data exported in TecPlot® or .csv formats
- + New fitted diameter distributions exported
- + Expanded selection of diameter and volume statistics exported for advanced statistical analysis

FlowSizer Custom Statistics

- + Fitting parameters available from new diameter fits include normal, modified log-normal, Matsumoto-Takahashi, and Nukiyama-Tanasawa routines
- + Fitted diameter statistics (D10, D32, etc.) available for display and export
- + Enhanced text-based statistics copy/paste function
- + Velocity statistics have increased display resolution



UNDERSTANDING, ACCELERATED

TSI Incorporated - Visit our website www.tsi.com for more information.

USA Tel: +1 800 874 2811
UK Tel: +44 149 4 459200
France Tel: +33 1 41 19 21 99
Germany Tel: +49 241 523030

India Tel: +91 80 67877200
China Tel: +86 10 8219 7688
Singapore Tel: +65 6595 6388



Distributed by:
Kenelec Scientific Pty Ltd
1300 73 22 33
sales@kenelec.com.au
www.kenelec.com.au