

PORTACOUNT[®] PRO/PRO+ RESPIRATOR FIT TESTER

QUICK START GUIDE

This guide will help you to quickly begin using your PortaCount[®] Pro /Pro+ Respirator Fit Tester for first time use with a personal computer.



1. Software Installation

Install the FitPro+™ Fit Test software on your computer (for further instructions, please see the *FitPro+ Fit Test Software User's Manual*, included on the FitPro+ Software CD in pdf format).



2. Initial PortaCount Pro/Pro+ Respirator Fit Tester Start-Up

Plug the PortaCount Pro fit tester into an AC power source. Press the **On/Off** button to turn the PortaCount Pro fit tester on.



Refer to the [Interactive Training Tutorial](#) and PortaCount Academy [Online Training Center](#) website (www.tsi.com/pcacademy) to learn about other necessary components and procedures, such as when to install the Alcohol Cartridge and how to perform the Daily Checks.

3. Communications Setup

After the PortaCount Pro fit tester has completed its initial warm up, connect the USB cable from the PortaCount Pro fit tester to your computer.

Connect the “USB-A” connection to the computer, the “USB-B” connection to the PortaCount Pro fit tester.



USB-A Female
(Chassis Mount)



USB-A Male



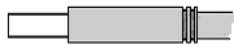
USB-A Male Plug
(Side View)



USB-B Female



USB-B Male



USB-B Male Plug
(Side View)

4. Device Driver Installation

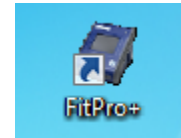
Microsoft[®] Windows[®] 7, 8, and 10 operating system: Device drivers install automatically during software installation.



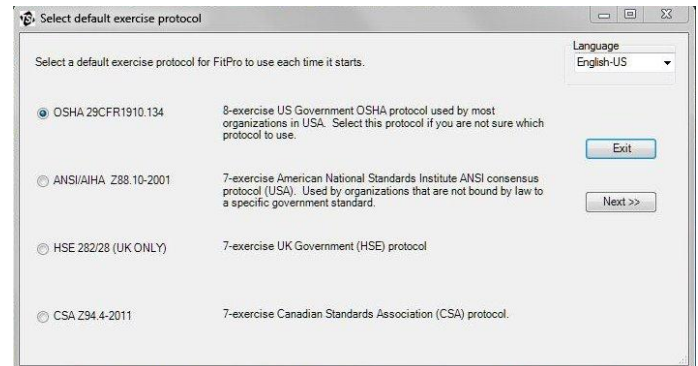
If the Wizard does not start automatically, or drivers do not install as described, refer to the RESFT 105: PortaCount Pro-to-PC Communications instructional course located at the PortaCount Academy [Online Training Center](#) website: www.tsi.com/pcacademy.

5. FitPro+ Software Start-Up

Start the FitPro Fit Test software.

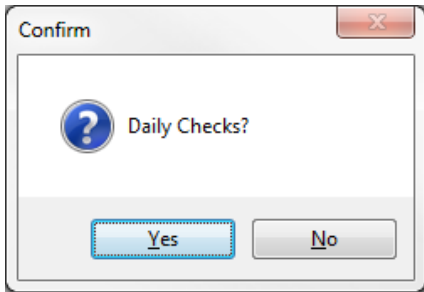


If prompted, select the appropriate default exercise protocol that your organization follows for fit testing. For example: “OSHA 29CFR1910.134”. Click **Next>>**.



6. Verify Communications

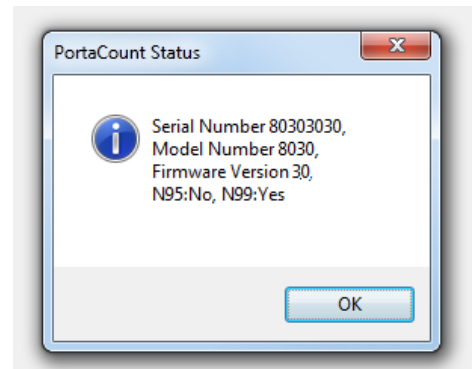
- a. To verify successful PortaCount Pro-to-Computer communications, when prompted to perform Daily Checks, click **No**.



Be sure to go back and perform the Daily Checks before fit testing.

- b. Go to **Setup | PortaCount Communication** menu.

- c. Select the appropriate PortaCount Pro Module Type: "PortaCount 8030/8038 Fit Test Driver."
- d. Click **Select**.
- e. Verify that the PortaCount Fit Tester is connected. A message similar to the one shown below should display.



Further Learning

You are now ready to learn about the daily operations of the PortaCount Pro Respirator Fit Tester and FitPro+ software. Refer to the PortaCount Pro Fit Tester Operation and Service manual, the FitPro+ Fit Test Software manual. These manuals are included in PDF format on the FitPro+ Software Installation CD and are available for download from the TSI website: www.tsi.com/portacount.

For further training on PortaCount Pro Respirator Fit Testing refer to the PortaCount Academy website at www.tsi.com/pcacademy.



TSI Incorporated – Visit our website www.tsi.com for more information.

USA	Tel: +1 800 874 2811	India	Tel: +91 80 67877200
UK	Tel: +44 149 4 459200	China	Tel: +86 10 8219 7688
France	Tel: +33 1 41 19 21 99	Singapore	Tel: +65 6595 6388
Germany	Tel: +49 241 523030		



Distributed by:
Kenelec Scientific Pty Ltd
1300 73 22 33
sales@kenelec.com.au
www.kenelec.com.au