

FUME HOOD MONITOR MODEL FHM10



Fume hoods are a primary source of protection in laboratories. Face velocity measurements are often used to gauge the performance of a fume hood's ability to contain and exhaust hazardous chemicals. By accurately measuring face velocity and alarming on unsafe conditions, TSI's FHM10 Fume Hood Monitors provide a high level of fume hood safety. And, the FHM10 helps users comply with standards and regulations set forth by OSHA, NFPA, ANSI Z9.5, and SEFA, calling for monitors to be installed on fume hoods.

Applications

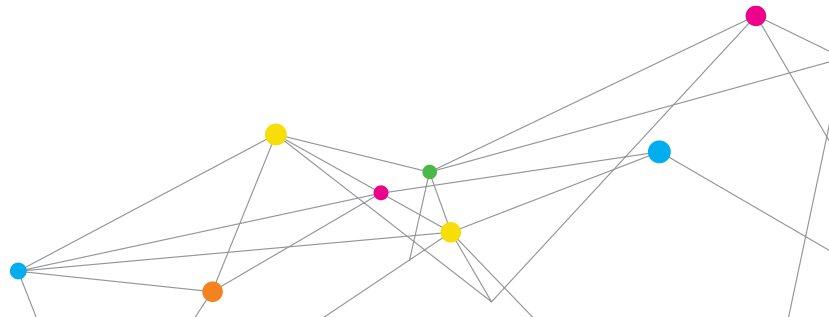
- + Research Laboratories
- + Life Science and Pharmaceutical
- + Universities and Academic
- + Vivariums
- + Healthcare Facilities

Features and Benefits

- + Accurately measures average fume hood face velocity
- + Temperature compensated sensor for accurate measurement as temperatures change in laboratories
- + Visual, audible, and remote alarms warn users of unsafe conditions
- + Analog output provides additional information
- + Assists in managing risk by communicating fume hood status information to Building Management System (BMS)
- + Seamless integration to BMS via BACnet®, LonWorks®, or Modbus™
- + Easy installation and calibration
- + Easy configuration using keypad
- + Large display provides detailed fume hood information
- + Surface or flush mount options available
- + Optional Flow Monitor available



UNDERSTANDING, ACCELERATED



SPECIFICATIONS

FUME HOOD MONITOR MODEL FHM10

Display Range

0 to 1,000 fpm (0 to 5.08 m/s)
0 to 10,000 cfm (0 to 4,720 l/s, 0 to 16,990 m³/hr)

Low Alarm Range

5 to 960 fpm (0.03 to 4.88 m/s)
0 to 10,000 cfm (0 to 4,720 l/s, 0 to 16,990 m³/hr)

High Alarm Range

80 to 1,000 fpm (0.41 to 5.08 m/s)
0 to 10,000 cfm (0 to 4,720 l/s, 0 to 16,990 m³/hr)

Analog Outputs

0-10 VDC or 4-20 mA
Represents Face Velocity, or Flow Rate

Alarm Contact Outputs

SPST, 2A @ 30 VDC Nominal

Contact Inputs

Night Setback, Flow

Communication Options

Modbus, N2, BACnet MS/TP, LonWorks

Input Power

24 VAC, 50/60 Hz or 15-40 VDC, 5 Watt Maximum

Operating Temperature

32 to 120° F (0 to 48.9° C)

Size (H x W x D)

6.67" x 2.92" x 1.25" (16.9 cm x 7.4 cm x 3.2cm)

Weight

0.5 lb (225 g)

Optional Accessories

800920 Slimline Monitor
800926 Flush Mounting Bracket

	FHM10-01	FHM10-02
TSI's Sidewall Velocity Sensor	+	
Visual and Audible Alarms	+	+
Flow Input		+
Contact Inputs	C	C
Analog Outputs	C	C
Alarm Contact Outputs	+	+
RS-485 (Modbus, Johnson N2)	+	+
BACnet MS/TP or LonWorks Compatible	O	O
+ = Feature of Instrument O = Optional versions available C = Configurable - see manual for options		

Specifications are subject to change without notice.

TSI and the TSI logo are registered trademarks of TSI Incorporated.

Modbus, LonWorks, and BACnet are registered trademarks of Modicon Inc., Echelon Corp., and ASHRAE respectively.



UNDERSTANDING, ACCELERATED

TSI Incorporated - Visit our website www.tsi.com for more information.

USA Tel: +1 800 874 2811
UK Tel: +44 149 4 459200
France Tel: +33 4 91 11 87 64
Germany Tel: +49 241 523030
India Tel: +91 80 67877200
China Tel: +86 10 8251 6588
Singapore Tel: +65 6595 6388



Distributed by:

Kenelec Scientific Pty Ltd
1300 73 22 33
sales@kenelec.com.au
www.kenelec.com.au