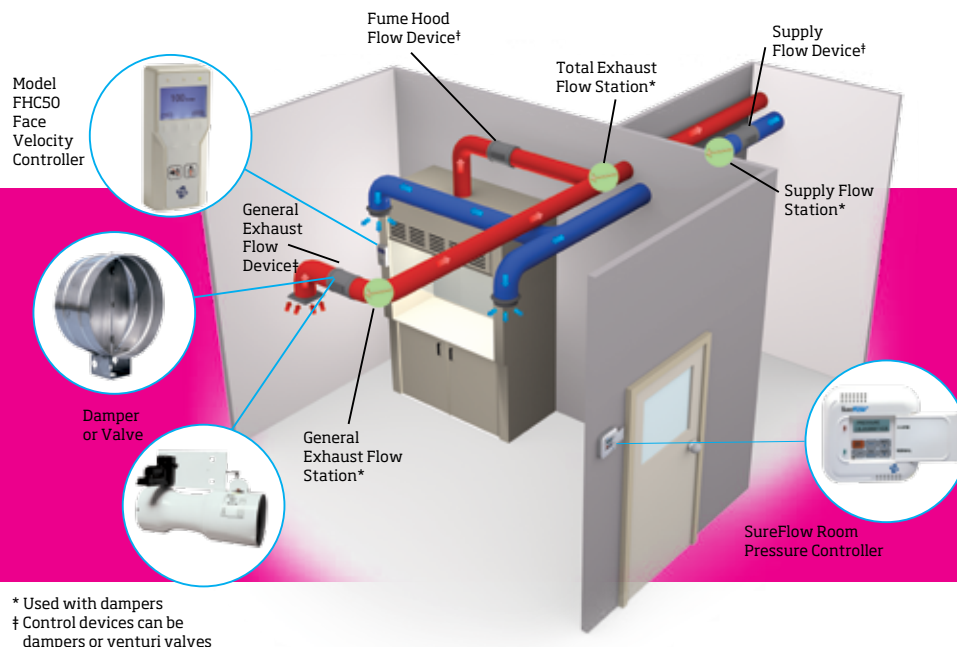


FLEXIBLE LAB CONTROL OPTIONS



Chemicals escaping into the laboratory atmosphere must not drift to other areas. Laboratory controls are your building's second line of defense. Safety and design requirements, however, are not identical for every laboratory. TSI offers laboratory controllers to match the safety requirements, from critical to desirable, of a wide variety of applications.

Many organizations directing fume hood practices, such as NFPA, ANSI and the U.S. OSHA, require laboratories to be maintained at a small negative pressure relative to surrounding areas. In practice, this negative pressure is achieved by exhausting more air than is supplied. The extra air exhausted must infiltrate into the laboratory from surrounding spaces, helping to ensure that chemical vapors cannot diffuse throughout a facility.

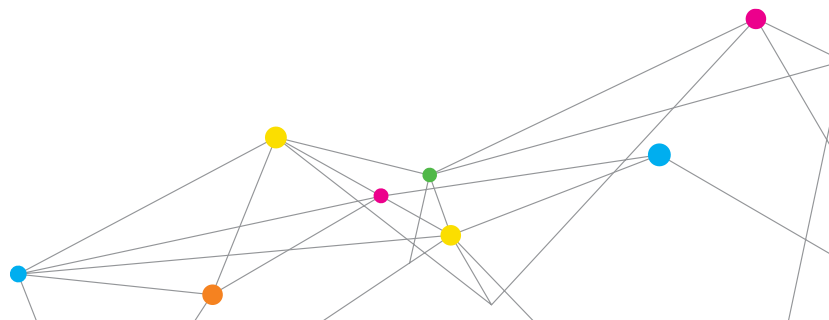
Maintaining this room pressure differential in the face of changing fume hood exhaust flows can be challenging. The wrong controls could jeopardize the safety, energy efficiency and comfort of your laboratory spaces. TSI room pressure controls maintain your laboratory environment using one of the following techniques:

Flow Tracking

- + Maintains a fixed volumetric difference (offset) between supply and exhaust flows
- + Used in areas where uninterrupted containment is not critical
- + Design of choice for open architecture laboratories
- + Room pressure may fluctuate



UNDERSTANDING, ACCELERATED

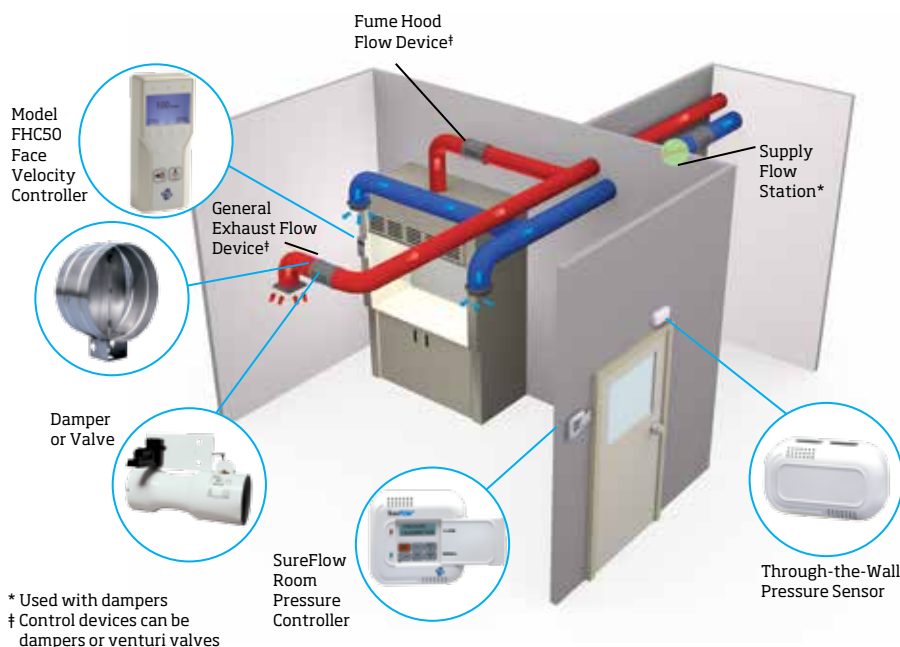


SPECIFICATIONS

FLEXIBLE LAB CONTROL OPTIONS

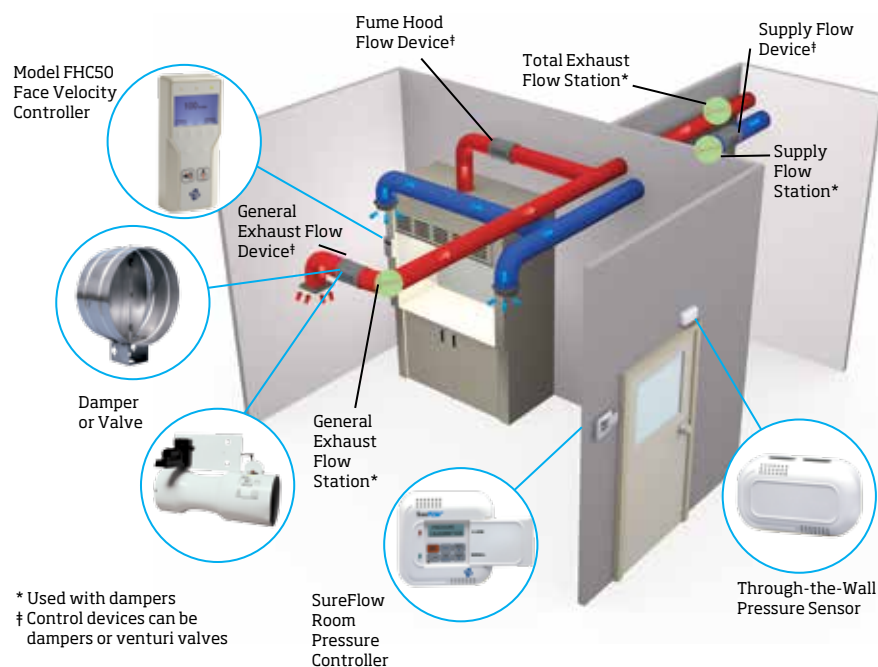
Direct Pressure

- + Maintains a measured pressure differential between lab and corridor
- + Ideal for small, closed labs with critical safety requirements
- + Design of choice when monitoring constant volume laboratories
- + Volumetric flow rates may fluctuate



Adaptive Offset

- + Fast flow tracking control
- + Direct pressure measurement slowly resets volume offset
- + Combines the safety of direct pressure with the air flow stability of flow tracking



UNDERSTANDING, ACCELERATED

TSI Incorporated - Visit our website www.tsi.com for more information.

USA Tel: +1 800 874 2811
UK Tel: +44 149 4 459200
France Tel: +33 4 91 11 87 64
Germany Tel: +49 241 523030

India Tel: +91 80 67877200
China Tel: +86 10 8251 6588
Singapore Tel: +65 6595 6388



Distributed by:
 Kenelec Scientific Pty Ltd
 1300 73 22 33
sales@kenelec.com.au
www.kenelec.com.au