

ANALOG BALOMETER® CAPTURE HOODS MODELS ABT701, ABT703, ABT711, ABT713

The ABT Analog Balometer® Capture Hood continues the long Alnor® tradition of providing accurate and dependable analog instrumentation to the ventilation testing and balancing community. By placing an Alnor® ABT Balometer® Capture Hood over a diffuser or grille, air volume measurements are obtained quickly and easily which maximizes productivity. Fast meter response and easy-to-read indicator over a large scale make the ABT Balometer® Capture Hood an ideal choice for facility engineers, ventilation testing and balancing professionals, and commissioning.



Model ABT701
and ABT711

Features and Benefits

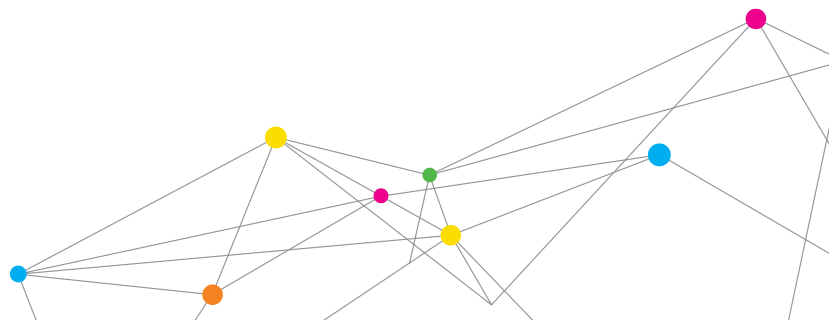
- + Simple-to-read analog meter allows for quick measurements
- + Easy-to-carry with one hand using sturdy middle handle
- + Ergonomic design and ultra light weight for easy one-person operation
- + Multiple hood sizes available
- + Measurement hold function
- + Wheeled, luggage-style carrying case

Applications

- + HVAC commissioning
- + Troubleshooting HVAC systems
- + Testing and balancing HVAC systems

Optional Accessories

- + Multiple hood sizes available



SPECIFICATIONS

ABT ANALOG BALOMETER® CAPTURE HOODS MODELS ABT701, ABT703, ABT711, ABT713

Supply and Exhaust Ranges

30 to 1,000 CFM (ft³/min), 50 to 2,000 CMH (m³/hr)

Accuracy

ABT701/ABT703 ±3% of full scale selected +5 CFM (ft³/min)
ABT711/ABT713 ±3% of full scale selected +10 CMH (m³/hr)

Units

ABT701/ABT703 CFM (ft³/min)
ABT711/ABT713 CMH (m³/hr)

Scale Divisions (Supply/Exhaust)

CFM (ft³/min) 5 from 30 to 250
10 from 200 to 500
20 from 400 to 1,000
CMH (m³/hr) 10 from 50 to 500
20 from 400 to 1,000
40 from 800 to 2,000

Power Requirements

Four AA-size cells alkaline

Battery life

200 CFM (340 CMH) 29.2 hours
800 CFM (1,360 CMH) 21.3 hours
1,000 CFM (1,700 CMH) 20.4 hours

Weight with Batteries

7.4 lb (3.4 kg)

Operating Temperature Range

32 to 140°F (0 to 60°C)

Storage Temperature Range

-40 to 140°F (-40 to 60°C)

Model Description

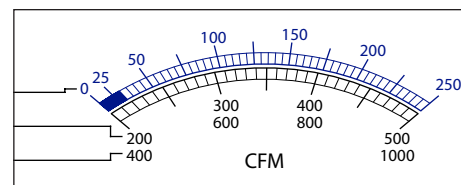
ABT701 30 to 1000 CFM (ft³/min) with 2 ft x 2 ft (610 mm x 610 mm) hood
ABT703 30 to 1000 CFM (ft³/min) with 16 in x 16 in (406 mm x 406 mm) hood
ABT711 50 to 2000 CMH (m³/hr) with 2 ft x 2 ft (610 mm x 610 mm) hood
ABT713 50 to 2000 CMH (m³/hr) with 16 in x 16 in (406 mm x 406 mm) hood

Optional Hood and Frame Kits

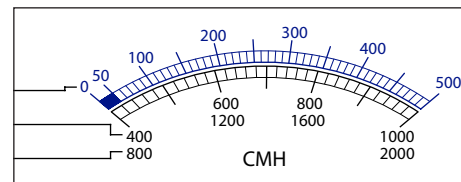
801097 2 ft x 2 ft (610 mm x 610 mm)
801201 2 ft x 4 ft (610 mm x 1,220 mm)
801200 1 ft x 4 ft (305 mm x 1,220 mm)
801202 1 ft x 5 ft (305 mm x 1,525 mm)
801203 3 ft x 3 ft (915 mm x 915 mm)
801209 16 in x 16 in (406 mm x 406 mm)
801210 5.25 in x 48 in (133 mm x 1220 mm)
801211 28 in x 28 in (710 mm x 710 mm)
801212 28 in x 50 in (710 mm x 1,270 mm)
801215 1 ft x 3 ft (305 mm x 915 mm)



Model ABT703
and ABT713



Models ABT701/ABT703



Models ABT711/ABT713

Specifications subject to change without notice.

Alnor, Balometer, TSI, and the TSI logo are registered trademarks of TSI Incorporated.



Alnor Products, TSI Incorporated

Visit our website at www.alnor.com for more information.

USA
India

Tel: +1 800 874 2811
Tel: +91 80 67877200

China
Singapore

Tel: +86 10 8219 7688
Tel: +65 6595 6388



Distributed by:
Kenelec Scientific Pty Ltd
1300 73 22 33
sales@kenelec.com.au
www.kenelec.com.au