



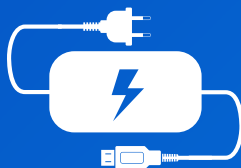
AIR QUALITY MONITOR
Quick Start Guide



Inventory



x 1



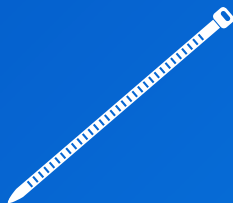
x 1



x 1



x 1



x 2

You Will Need



x 1

Optional

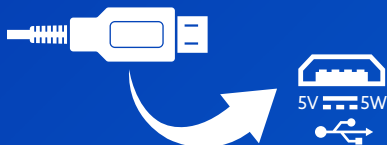
Four (4) screws are required (not supplied) if installing on wall, fence, wood board, etc.



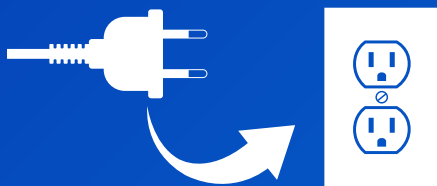
x 4


1) Set Up

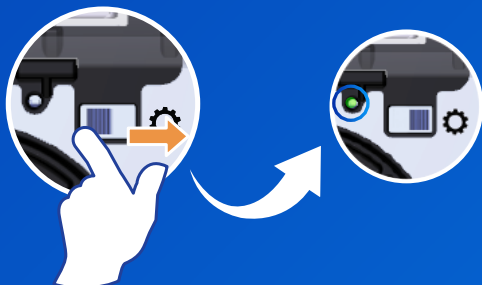
- 1) Connect power supply (USB end) to BlueSky™ Air Quality Monitor.



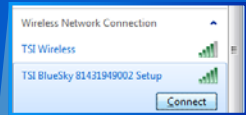
- 2) Connect power supply (other end) to a power outlet.



- 3)  To configure BlueSky monitor wireless settings, slide switch towards the settings gear icon. Status LED light will flash 1 time/second.



- 4) **Accessing your BlueSky™ Air Quality Monitor:**
Open computer/phone/device wireless settings. Connect to BlueSky network.



- 5) Enter unique password (aka Network Security Key or PWD on label), which is provided on the BlueSky label.

Place label here

- 6) Type **192.168.4.1** into web browser

TSI BlueSky Wifi Setup
SN: 8143YYWWXXX
SSID
password
Show Password
SAVE

TSI BlueSky Wifi Setup
Wi-Fi Network Saved
Please move switch to operate position



Connecting your BlueSky monitor to the Wireless (Wi-Fi) network:

Open a web browser on your computer/phone/device and type 192.168.4.1 into the URL address field. When prompted, enter your Wi-Fi Network Name (SSID) and password, then save.

Note: If using a mobile device, make sure mobile data is turned off.

Note: Then network needs to be a wireless network with access to the Internet. The BlueSky monitor will use this network to connect to the cloud.

- 7) Move switch to close configuration settings (away from settings gear icon). Wait 60 seconds.



8A)



Success

The BlueSky™ Air Quality Monitor is successfully connected to the cloud when the status LED light flashes 1 time/2 seconds.



8B)



Trouble Shooting

A) Incorrect Wi-Fi network name or password:
2 flashes/second

B) No Internet: 3 flashes/second

Please note that, as long as the BlueSky monitor is not in setup/configuration mode, data will be automatically saved to the pre-installed SD card. Once the SD card data capacity is reached, it will begin overwriting data.



To Resolve:

Go back to step 3.

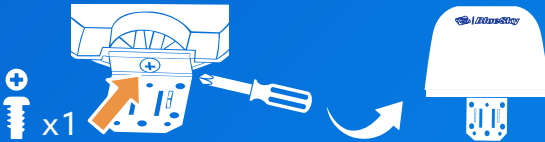
- 9) Visit www.tsilink.com to sign up for an account and register your product using the serial number.

2) Install

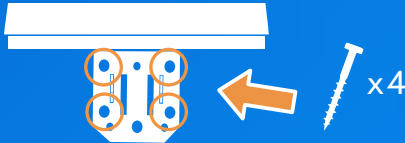
1)



2)

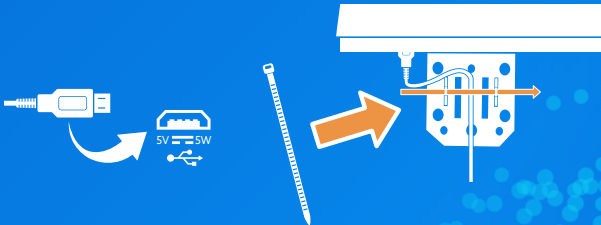


3A) To install on wall, fence, wood board, etc.



3B) To install on pole

Feed plastic ties through slots in bracket. Slip USB cord between plastic tie and bracket, secure.



4) Connect BlueSky™ Air Quality Monitor to power outlet. Status LED light will flash 1 time/second when successfully connected.



Distributed by:

Kenelec Scientific Pty Ltd
1300 73 22 33
sales@kenelec.com.au
www.kenelec.com.au