

QUICK START GUIDE


LOW PRESSURE MEASUREMENT KIT

5300 SERIES

P/N 6011710, REV. B
APRIL 2019

5300 Series Low Pressure Measurement Kit (5300-LPMK)

Components

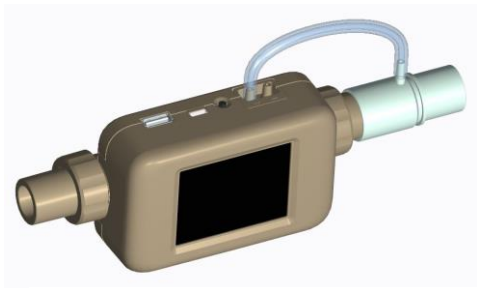
Item	Description	Qty.	Picture
1	22-mm (M/F) Airway Pressure Fitting with Screen	2	
2	1/8 inch ID x 1/4 inch OD Tubing	96 in.	



Assembly

Standard Setup: 22-mm ISO Tube Ends

1. Attach the 22-mm Airway Pressure Fitting to the outlet side Tube End of the 5300 Series Instrument with the barb facing up.
2. Measure and cut a length of tubing and connect it from the Airway Pressure Fitting barb to the (+) port on the Multi-Meter.



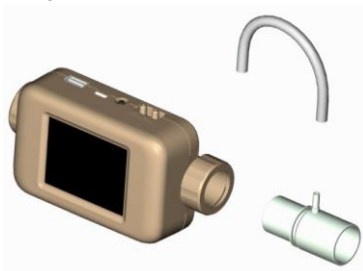
Distributed by:

Kenelec Scientific Pty Ltd
1300 73 22 33
sales@kenelec.com.au
www.kenelec.com.au

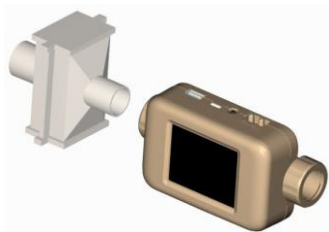
Assembly

Alternative Setup: 15 mm, 3/4 inch or 1/2 inch Tube Ends

1. Remove tube ends from the meter then screw the collars back on.
2. Insert the Airway Pressure Fitting into the outlet side of the Multi-Meter in the inverted direction with the barb facing up.
3. Measure and cut a length of $1/8$ ID x $1/4$ OD tubing and connect it from the Airway Pressure Fitting barb to the (+) port of the Meter.



4. Insert the Inlet Filter– Low Pressure (supplied in Std Accessory Kit) into the inlet side of the Multi-Meter in the inverted direction.



5. Insert alternative Tube Ends into the inlet of the Filter and into the outlet side of the Airway Pressure Fitting.

