

Drinking Water Analysis Streamlined

OVERVIEW

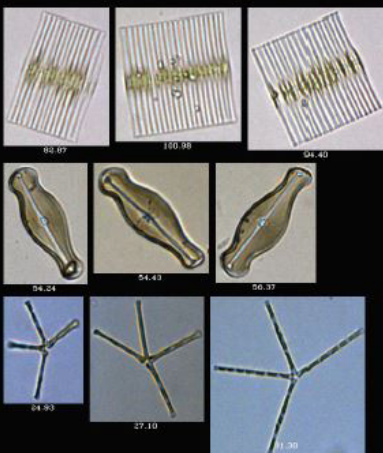
The new FlowCam® 5000 is an affordable flow imaging microscope for high volume, routine monitoring. Specifically designed to meet the needs of water utilities, the FlowCam 5000 can help quickly monitor cyanobacteria and algae populations in your source water. The simplified design ensures that it is straightforward to implement into any lab setting.

- Our most affordable instrument
- Calculate cell count, concentration, and biovolume of all organisms
- Measure and count particles sized 3 µm to 300 µm
- Includes VisualSpreadsheet software which measures 40+ morphological parameters including color metrics, shape, and size used to semi-automatically classify taxa

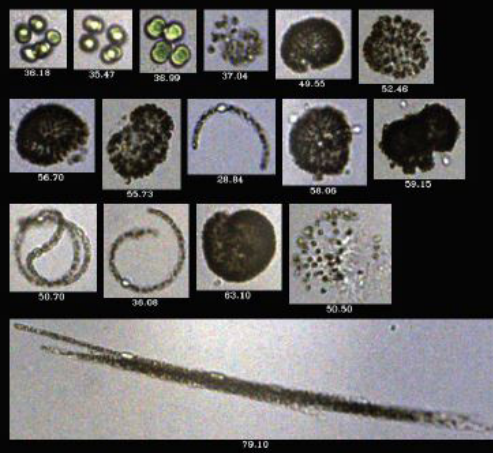


APPLICATIONS

- Monitor taste and odor algae and cyanobacteria in source water
- +
- Detect filter-fouling diatoms
- +
- Calculate concentration of each taxa
- +
- Monitor filter performance
- +
- Count and measure any particle in a water sample (e.g. sediment)



FILTER-CLOGGING DIATOMS
IMAGED AT 10X



CYANOBACTERIA
IMAGED AT 10X



FlowCam® 5000

DRINKING WATER ANALYSIS STREAMLINED

FlowCam 5000	
Dimensions	17.3" wide x 10.0" deep x 10.5" tall
Particle Size Range	3 µm to 1 mm (actual size range determined by magnification selected)
Magnification & Flow Cells	Choose one configuration per instrument: 20X (~200X magnification), flow cell depth: 50 µm extruded 10X (~100X magnification), flow cell depth: 100 µm extruded 4X (~40X magnification), flow cell depth: 300 µm extruded
Focus System	Manual focus only
Sample Processing Capability	Up to 1mL/minute
Measured Parameters	Basic Shape Parameters: Area, Aspect Ratio (width/length), Area Based Diameter (ABD), Equivalent Spherical Diameter (ESD), Length, Volume (ABD-based), Volume (ESD-based), Width, 3 Biovolume Measurements Advanced Morphology Parameters: Area (Filled), Circle Fit, Circularity, Circularity (Hu), Compactness, Convex Perimeter, Convexity, Elongation, Fiber Curl, Fiber Straightness, Geodesic Aspect Ratio, Geodesic Length, Geodesic Thickness, Perimeter, Roughness, Symmetry Gray Scale and Color Measurements: Average Blue, Average Green, Average Red, Edge Gradient, Intensity, Blue/Green Ratio, Red/Blue Ratio, Red/Green Ratio, Sigma Intensity, Sum Intensity, Transparency
Camera	High resolution (1920x1200 pixels) CMOS. Monochrome and color available
Frame Rate	Shutters up to 60 frames per second
Fluidics	Micro syringe pump with multiple sizes to optimize flow rates: 0.5 mL, 1 mL, 5 mL
Data Acquisition Method	Auto Imaging
Fluorescence Emission & Detection	Available only in FlowCam 8400 and FlowCam Cyano
VisualSpreadsheet® Software	Interactive, image-based analytical software that generates 40+ particle measurements per cell. Filter, sort, and classify data based on user-defined criteria. Create libraries to automate classification for future sample analysis. Multi-user licenses available.

Will FlowCam 5000 solve your particle analysis needs?

Contact us for more information or to arrange for a demo or sample analysis.



Distributed by:
Kenelec Scientific Pty Ltd
1300 73 22 33
sales@kenelec.com.au
www.kenelec.com.au

