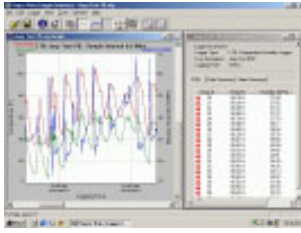




# Data Loggers

## LOGiT Series

Select the right Logger for your application...



### Features/Benefits

- Stores over 10,000 measurement points
- 1 second to 18 hour sample rate; 1 second increments
- Custom user identification (30 characters)
- Real Time data monitoring
- Over/Under Alarm threshold settings
- Visual alarm indication
- User selectable Recording Start (Specify date & time, immediate after setup or on door close)
- Tamper proof
- 20 month battery life (at 1 minute sample rate)
- Data rollover option
- Unique logger ID
- One PC Software operates with all loggers (LLS not included)
- Graphic or text data
- Zoom capability
- USB interface optional (USBS)
- 1 year warranty

### Application Note:

The LOGiT Series Data Loggers have one common PC Software and Interface Kit (LLS or LLSU).

Choose one or more LOGiT Data Loggers and the appropriate PC Software Interface Kit to complete your Data Logger selection. See page 82 for details.

### For Temperature and Temperature/Humidity Sensitive Applications:

- Refrigerators/Freezers
- Commercial Refrigeration Systems
- Medical Storage Facilities
- Laboratories
- Greenhouses
- Florists
- Museums

### L2T Temperature Logger (Internal & External)

- One Internal and One External Temperature Measurement, Simultaneously

### LTT Dual Temperature Logger

- 2 Independent External Temperature Measurements & Temperature Differential

### LTC Thermocouple Temperature Logger

- One internal and one external (J, K, E, T, R, S Thermocouples) temperature measurement

### LTH Temperature and Humidity Logger

- Integral Temperature, Humidity and Dew Point Measurements

### LPT Pressure and Temperature Logger

- External Pressure and Temperature Measurements

### For Pressure and Temperature Sensitive Applications:

- Compressor Run Cycles
- Testing New Installations
- Pneumatic air lines
- Tracking Intermittent Problems
- Superheat Measurements

### LCV Current and Voltage Logger

- External Current Probe and Voltage Measurements

### For Simultaneous Single Phase Current and Voltage Monitoring:

- Compressor and Fan Run Cycles
- Verification of Power Conditions
- Troubleshooting Intermittent problems
- Use three LCV's for Three Phase Applications

### L420 4 – 20 ma Logger

- Connection for 4 – 20 ma loop measurements

### For Monitoring 4 – 20 ma Process control loops in:

- Manufacturing
- Package Handling
- Automated Test Systems





## LT2, LTH, LTC & LTT Data Logger Specifications

	LT2	LTH	LTC	LTT
Sample Point Capacity	21,500 points (Single channel) 10,750 points and differential (Dual channel)	21,500 for temperature only 10,750 points for Temperature, Humidity and Dew Point	10,750 points for external and internal temperature	21,500 temperature points (1 probe) 10,750 temperature points and differential (2 probes)
Sampling Rate	1 second to 18 hours	1 second to 18 hours	1 second to 18 hours	1 second to 18 hours
Alarms	Over and under alarms for each probe.	Over and under alarms for temperature & humidity.	Over and under alarms for each probe	Over and under alarms for each probe.
Temperature Range (Internal Sensor)	32°F to 140°F (0°C to 60°C) w/ Alkaline Battery -40°F to 150°F (-40°C to 65°C) w/ Lithium Battery	32°F to 140°F (0°C to 60°C) w/ Alkaline Battery -40°F to 150°F (-40°C to 65°C) w/ Lithium Battery	32°F to 140°F (0°C to 60°C) w/ Alkaline Battery -40°F to 150°F (-40°C to 65°C) w/ Lithium Battery	
Temperature Range (External Sensor)	-40°F to 150°F  (-40°C to 65°C)		Depends on thermocouple (A, B, J, K, E, T, R, S)	-50°F to 300°F  (-46°C to 150°C)
Accuracy	±1.0°F (0.5°C)	±2°F (1°C)	Depends on thermocouple	±2°F (1°C)
Resolution	0.1°F (0.05°C)	0.1°F (0.05°C)	0.1°F (0.05°C)	0.1°F (0.05°C)
Time Accuracy	±100ppm @75°F	±100ppm @75°F	±100ppm @75°F	±100ppm @75°F
Relative Humidity Range		0% to 99.9% RH, Non-condensing.		0% to 95% RH, non-condensing
Relative Humidity Accuracy		±2% full scale, from 0% to 95% RH for temperatures between 32°F and 140°F (0°C to 60°C)		
Relative Humidity Resolution		0.1% RH		
Temperature using Alkaline Battery	32°F to 140°F (0°C to 60°C)	32°F to 140°F (0°C to 60°C)	32°F to 140°F (0°C to 60°C)	32°F to 140°F (0°C to 60°C)
Temperature using Lithium Battery	-40°F to 150°F (-40°C to 65°C)	-40°F to 150°F (-40°C to 65°C)	-40°F to 150°F (-40°C to 65°C)	-40°F to 150°F (-40°C to 65°C)
Operating Range Humidity	0% to 95% RH, Non-condensing	0% to 99.9% RH, Non-condensing		
Storage Temperature	-40°F to 170°F (-40°C to 77°C)	-40°F to 170°F (-40°C to 77°C)	-40°F to 170°F (-40°C to 77°C)	-40°F to 170°F (-40°C to 77°C)
Calibration	Single point offset calibration available through software.	Single point offset calibration available through software. Humidity is factory calibrated.	Single point offset calibration available through software.	Single point offset calibration available through software.
Dimensions	3" x 2.5" x 1.1" (7.6cm x 6.4cm x 2.8cm)	3" x 2.5" x 1.1" (7.6cm x 6.4cm x 2.8cm)	3" x 2.5" x 1.1" (7.6cm x 6.4cm x 2.8cm)	3" x 2.5" x 1.1" (7.6cm x 6.4cm x 2.8cm)
Weight	2.5 oz (71g)	2.5 oz (71g)	2.5 oz (71g)	2.5 oz (71g)
Power Source	9V Alkaline or Lithium battery (not included)	9V Alkaline or Lithium battery (not included)	9V Alkaline or Lithium battery (not included)	9V Alkaline or Lithium battery (not included)
Battery Life (average use)	18 Months using Alkaline Battery 36 Months using Lithium Battery	20 Months using Alkaline Battery 40 Months using Lithium Battery	20 Months using Alkaline Battery 40 Months using Lithium Battery	20 Months using Alkaline Battery 40 Months using Lithium Battery

\*Note: Logger needs optional **LLS** Software package to program data logger and download data for analysis. It is not included with any LOGiT data logger.

\*Note: The SUPCO LOGiT and DL Series Loggers are NOT compatible.



23 Redland Drive  
Mitcham, VIC 3132

T 1300 73 2233  
F 1300 73 2244

Suite 206, 10 Norwest  
Central, Century Circuit  
Baulkham Hills, NSW 2153

T 02 8831 8366  
F 02 8831 8399

info@kenelec.com.au  
www.kenelec.com.au