

Pharmaceutical Net

Facility Monitoring Software

Pharmaceutical Net is a powerful software program that provides a comprehensive view of the particle, environmental, and process monitoring conditions. It enables an operator to collect, display, analyze, store, and report data from a network of monitoring instrumentation.

BENEFITS

Improved Control

- Real-time displays immediately highlight process problems
- Identifies both short and long term trends
- Real-time alarm device control and SMS/paging/email functions notify users of alarm conditions for immediate action

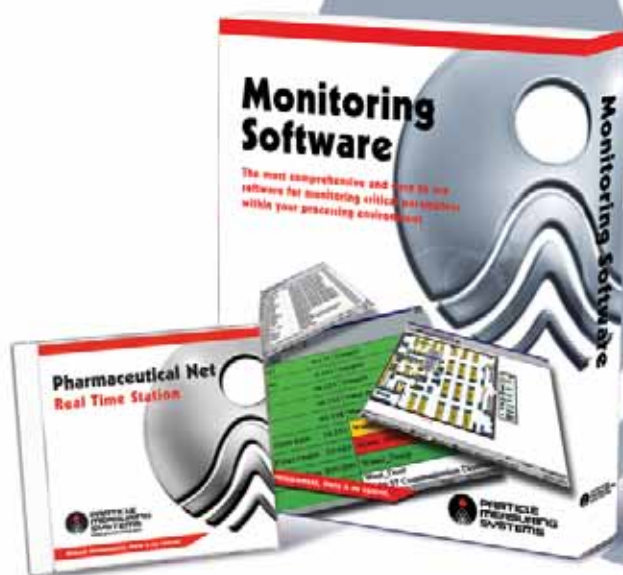
Easy to Use

- Extensive online help guides the operator through each function
- Setup screens for instrument configuration, alarm condition definition, and report printout schedules reduce setup and maintenance time
- Simple-to-use icons speed access to key features, improving response time

APPLICATIONS

- Facility environmental monitoring
- Filter testing
- Cleanroom compliance monitoring
- Troubleshooting
- 21CFR11-compliant reporting
- Centralized environmental data management

Without measurement, there is no control.

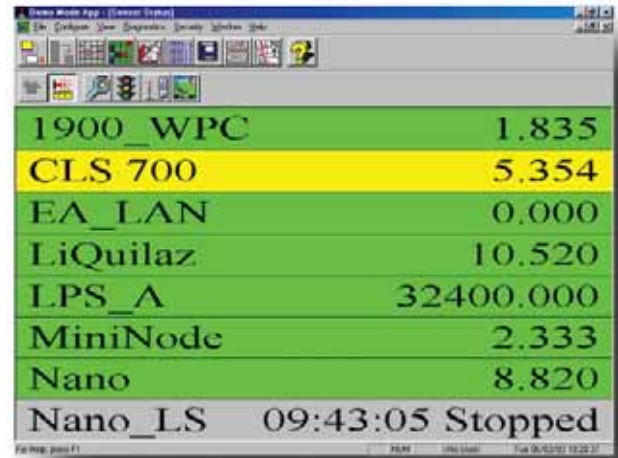


FEATURES

- Windows® 2000 and XP compatibility
- Ethernet networking capabilities using TCP/IP
- On-the-fly instrument configuration
- Data reporting using multiple electronic formats including web compatible
- Mathematical and statistical operations including log reduction and filter efficiency
- Real-time and retrieved data in multiple formats including status, current value, live and retrieved plots, audit trail tabular spreadsheets, and maps
- Windows Terminal Server support through Remote Desktop Protocol 5.1
- Integrated SMS for sending messages to mobile phones using Global System For Mobile Communications
- OPC communications with other data systems
- Multi-language support
- Flexible security system that allows multiple users to have unique IDs and passwords and customized settings

Sensor Status Screen

The Pharmaceutical Net program provides multiple sensor status screens that allow the user to display the current particle counts, in real time, for each sample point, group, or combination. When an alarm-level event occurs, the color status for that sample point or group will change to reflect the new condition. Sensor problems, such as laser power, flow, and communications, are also reflected in the color of the status screen.



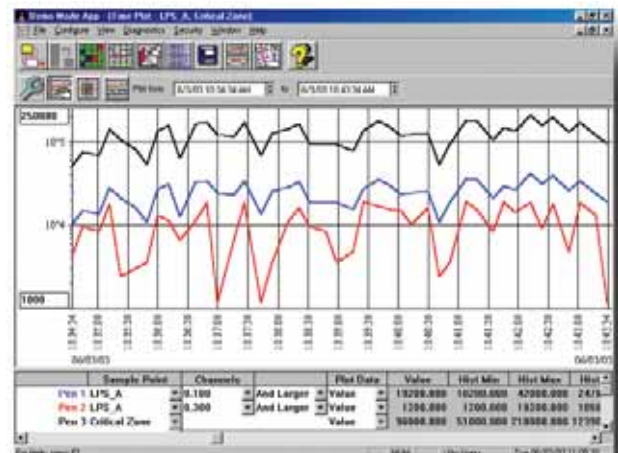
Facility Map

A customized map may be created to illustrate the monitoring instruments configured into the system. The status condition and current values for selected sample points are displayed on the screen and updated in real time. The operator may add or change any monitoring instrument while Pharmaceutical Net is collecting data. Multiple maps may be generated and organized to display a magnified view of specific locations within the facility.



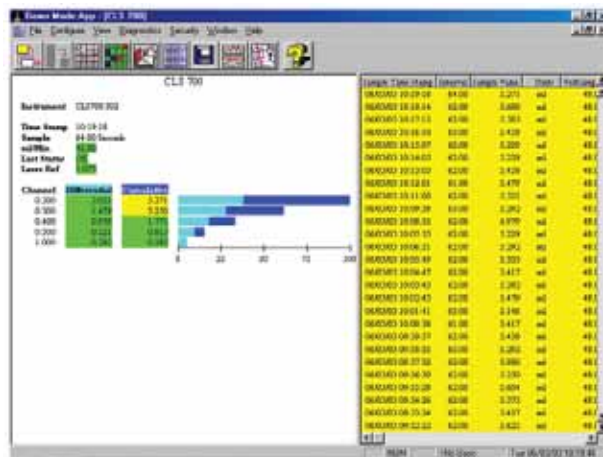
Time Plots: Real-Time and SPC

Real-time or retrieved data may be plotted using up to ten color-coded pens for each plot. The operator may select particle and environmental sample points, alarm and warning limits, and instrument status levels to appear as selected pens on the time plot in either a linear or log scale. Multiple time plots may be displayed on the screen simultaneously and may be stored for later data analysis.



Historical Tabular

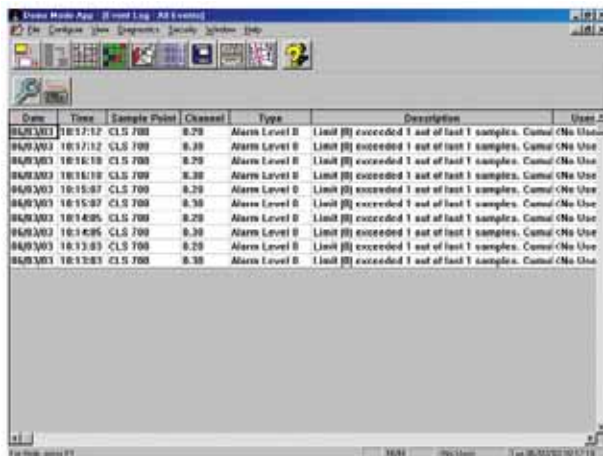
Detailed statistical information for each sample point is provided in real time on the tabular display screens. In just one screen, the operator is able to view the instrument's name, status condition, current values, number of samples, as well as minimum, maximum, average, and standard deviation for selected sample points. The historical tabular display screen enables the operator to review retrieved sample points in a similar format.



Event Log and Automated Tasks

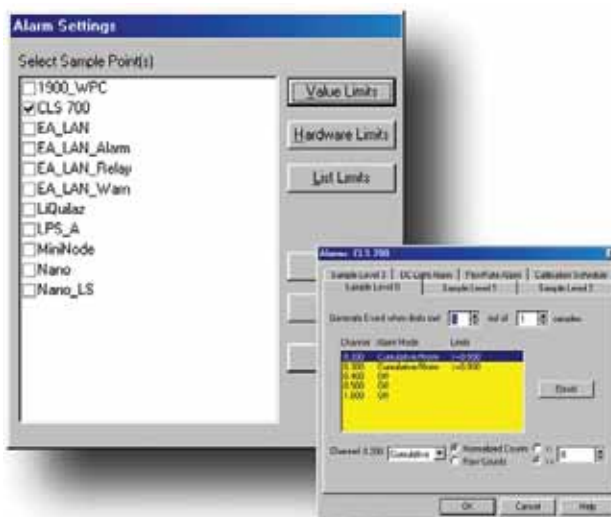
An audit trail registers system activities such as alarm and warning conditions, communication errors, instrument status, configuration events, and operator actions. An operator can review each event and describe the cause in a user entry field.

A job generator allows users to schedule automated tasks. Pharmaceutical Net can generate both printed and electronic reports, create a backup of the database, run recipes, operate external programs, and more, without a user present.



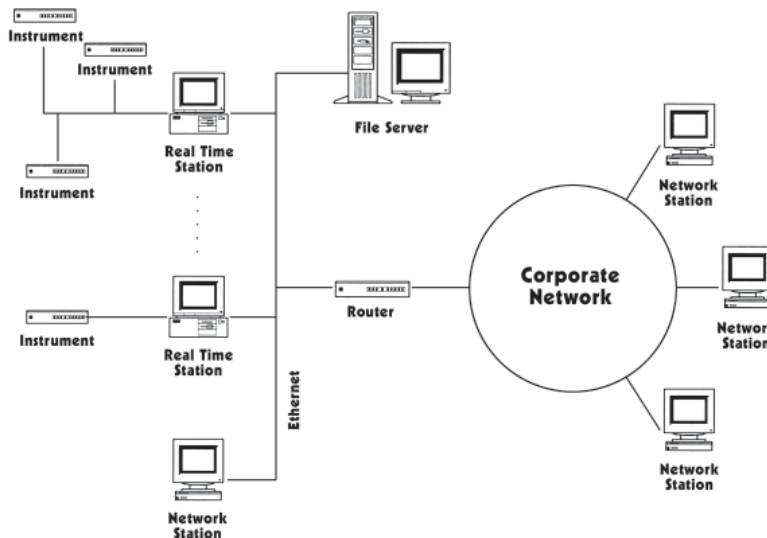
Alarms and Paging

Pharmaceutical Net allows an operator to set alarms that generate audible or visible alerts when preset limits (parameters) are exceeded. Pharmaceutical Net offers four alarm levels, allowing progressively out-of-parameter conditions to trigger increasingly urgent alarms. Alarm status information can be relayed to the Status Display, Tabular Display, and the Event Log. Alarm priorities can be set, allowing more important alarms to override less important alarms. An optional pager feature can be activated when an alarm is triggered.



The Pharmaceutical Net network option offers a powerful, real-time networking capability. Pharmaceutical Net systems connected to instrumentation can broadcast data in real time over an Ethernet connection to other Pharmaceutical Net systems not actually connected to instrumentation. Network stations can support a terminal server, allowing multiple users to connect and run the application simultaneously.

Through real-time networking, data can be viewed and analyzed from the convenience of an office. Through use of a central file server, office network stations can be configured to display data from any combination of instruments reported from the real-time stations.



Specifications

Pharmaceutical Net

Instrumentation supported: All Particle Measuring Systems instruments. Pharmaceutical Net also supports non-Particle Measuring Systems third-party instruments, such as TOC, differential pressure monitors, air velocity monitors, and many others. Please contact manufacturer for more detail on specific models supported.

Minimum computer equipment required: Pentium III or better microprocessor with at least 512MB* of RAM, >10GB fixed disk, CD ROM, 17" SVGA monitor 800 x 600, 256 color resolution, default printer, RS-232 serial communication port, network interface card. Dual Processors not supported. Computers with Pentium IV HT processors should have Hyper Threading disabled.

Recommended printers: Pharmaceutical Net is compatible with commercially available printers that have been tested and approved for Windows compatibility.

Operating systems supported: Windows 2000, Windows XP Professional

* For complex configurations, 1GB is recommended.
Windows® is a registered trademark of Microsoft Corporation.
Particle Measuring Systems, Inc. reserves the right to change specifications without notice.



Registration applies to the Boulder, Colorado facility



Particle Measuring Systems Headquarters
5475 Airport Blvd., Boulder, CO 80301
1-303-443-7100 1-800-238-1801 Fax: 1-303-546-7331
Instrument Service & Support: 1-800-557-6363
Customer Response Center: 1-877-475-3317

Particle Measuring Systems Europe
Tel: +44 1684 581000
PMSEurope@pmeasuring.com

Particle Measuring Systems Japan
Tel: +81 3-5298-8175
PMSJapan@pmeasuring.com

Particle Measuring Systems Singapore
Tel: +65 68460-500
PMSAsiaPacific@pmeasuring.com

Particle Measuring Systems China
Tel: +86 21-6113-3688 751
PMSChina@pmeasuring.com

Particle Measuring Systems Mexico
Tel: +52 55-22-71-51-06
PMSMexico@pmeasuring.com

Particle Measuring Systems Puerto Rico
Tel: 1-787-740-8582, 1-787-740-1878
PMSPuertoRico@pmeasuring.com