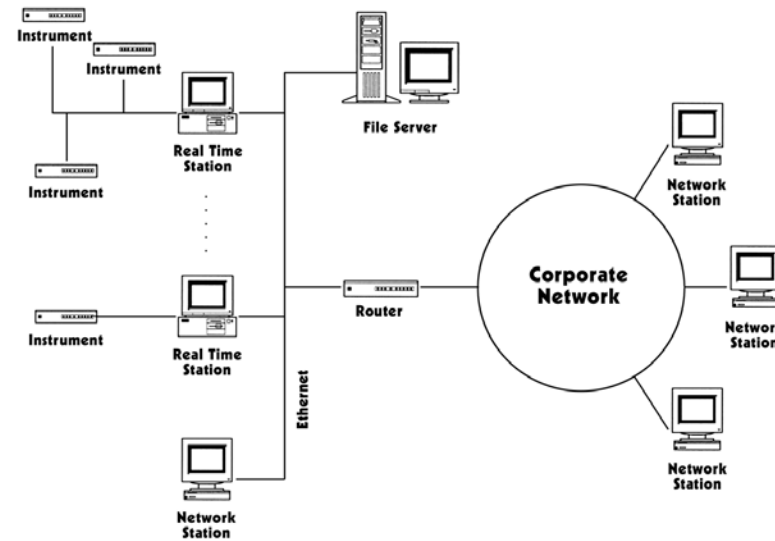


The Facility Net network option offers a powerful, real-time networking capability. Facility Net systems connected to instrumentation can broadcast data in real-time over an Ethernet connection to other Facility Net systems not actually connected to instrumentation. Network stations can support a terminal server, allowing multiple users to connect and run the application simultaneously.

Through real-time networking, data can be viewed and analyzed from the convenience of an office. Through use of a central file server, office network stations can be configured to display data from any combination of instruments reported from the real-time stations.



## Specifications

### Facility Net

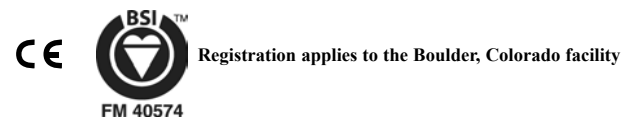
**Instrumentation supported:** All Particle Measuring Systems instruments. Facility Net also supports non-Particle Measuring Systems third-party instruments, such as TOC, differential pressure monitors, air velocity monitors, and many others. Please contact manufacturer for more detail on specific models supported.

**Minimum computer equipment required:** See operating systems minimum requirements

**Recommended computer equipment:** 1 GB of RAM, 80 GB hard drive, CD-ROM

**Operating systems supported:** Windows® XP Professional, Windows Server™ 2003

Windows®, SQL Server™, and Server™ 2003 are registered trademarks of Microsoft Corporation.



### AUTHORIZED REPRESENTATIVE



Particle Measuring Systems Headquarters  
5475 Airport Blvd., Boulder, CO 80301  
1-303-443-7100 1-800-238-1801 Fax: 1-303-546-7331  
Instrument Service & Support: 1-800-557-6363  
Customer Response Center: 1-877-475-3317

Particle Measuring Systems Europe  
Tel: +44 1684 581000  
PMSEurope@pmeasuring.com

Particle Measuring Systems Japan  
PMSJapan@pmeasuring.com

Particle Measuring Systems Asia Pacific  
PMSAsiaPacific@pmeasuring.com

Particle Measuring Systems Singapore  
Tel: +65 6496 0330  
PMSSingapore@pmeasuring.com

Particle Measuring Systems China  
PMSChina@pmeasuring.com

Particle Measuring Systems Mexico  
PMSMexico@pmeasuring.com

Particle Measuring Systems Puerto Rico  
PMSPuertoRico@pmeasuring.com

# Facility Net

## Facility Monitoring Software

**Facility Net is a powerful software program that provides a comprehensive view of the particle, environmental, and process monitoring conditions. It enables an operator to collect, display, analyze, store, and report data from a network of monitoring instrumentation.**



## BENEFITS

### Improved Control

- Real-time displays immediately highlight process problems
- Identifies both short and long term trends
- Real-time alarm device control and SMS/paging/email functions notify users of alarm conditions for immediate action

### Easy to Use

- Extensive online help guides the operator through each function
- Setup screens for instrument configuration, alarm condition definition, and report printout schedules reduce setup and maintenance time
- Simple to use icons speed access to key features, improving response time

## APPLICATIONS

- Facility environmental monitoring
- Filter testing
- Cleanroom compliance monitoring
- UPW and chemical distribution system monitoring
- Centralized environmental data management

**Without measurement, there is no control.**

## FEATURES

- Windows® XP and Windows Server™ 2003 compatibility
- Ethernet networking capabilities using TCP/IP
- Export to SQL Server™ 2005 (Professional or Express)
- On-the-fly instrument configuration
- Mathematical and statistical operations including log reduction and filter efficiency
- Real-time and retrieved data in multiple formats including status, current value, live and retrieved plots, audit trail tabular spreadsheets, and maps
- Integrated SMS for sending messages to mobile phones using Global System For Mobile Communications
- Multi-language support
- Flexible security system allows multiple users to have unique IDs, passwords, and customized settings

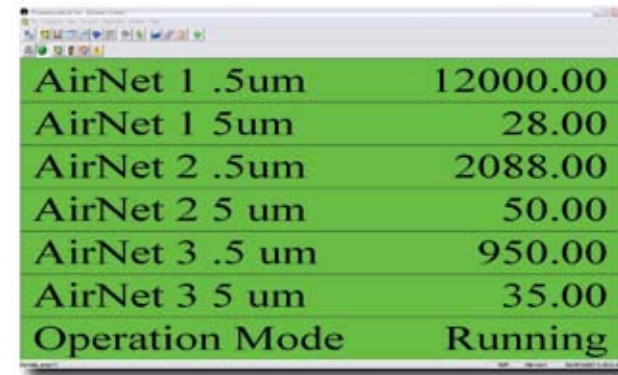
## OPTIONS

- OPC communications with BMS, SCADA, or other data management system
- Network stations allow remote analysis of cleanroom data



## Sensor Status Screen

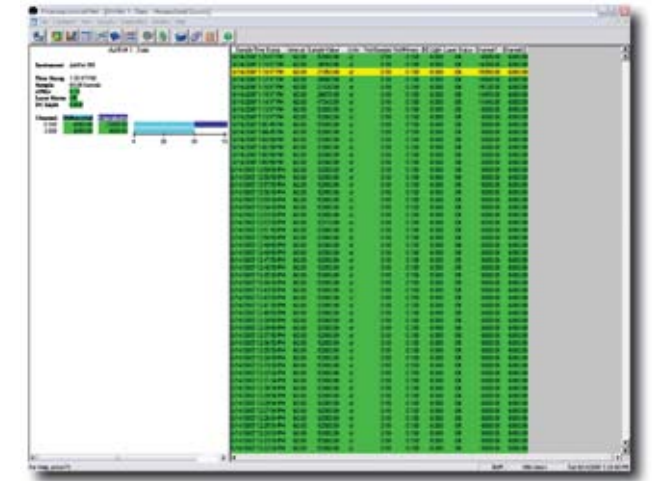
The Facility Net program provides multiple sensor status screens that allow the user to display the current particle counts, in real-time, for each sample point, group, or combination. When an alarm-level event occurs, the color status for that sample point or group will change to reflect the new condition. Sensor problems, such as laser power, flow, and communications, are also reflected in the color of the status screen.



AirNet 1 .5um	12000.00
AirNet 1 5um	28.00
AirNet 2 .5um	2088.00
AirNet 2 5 um	50.00
AirNet 3 .5 um	950.00
AirNet 3 5 um	35.00
Operation Mode	Running

## Historical Tabular

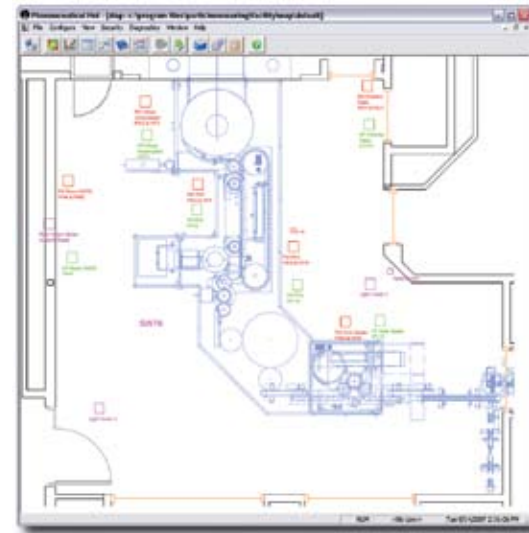
Detailed statistical information for each sample point is provided in real time on the tabular display screens. On just one screen, the operator is able to view the instrument's name, status condition, current values, number of samples, as well as minimum, maximum, average, and standard deviation for selected sample points. The historical tabular display screen enables the operator to review retrieved sample points in a similar format.



Sample Point	Instrument	Status	Current Value	Min	Max	Avg	Std Dev
AirNet 1 .5um	...	...	...	...	...	...	...
AirNet 1 5um	...	...	...	...	...	...	...
AirNet 2 .5um	...	...	...	...	...	...	...
AirNet 2 5 um	...	...	...	...	...	...	...
AirNet 3 .5 um	...	...	...	...	...	...	...
AirNet 3 5 um	...	...	...	...	...	...	...

## Facility Map

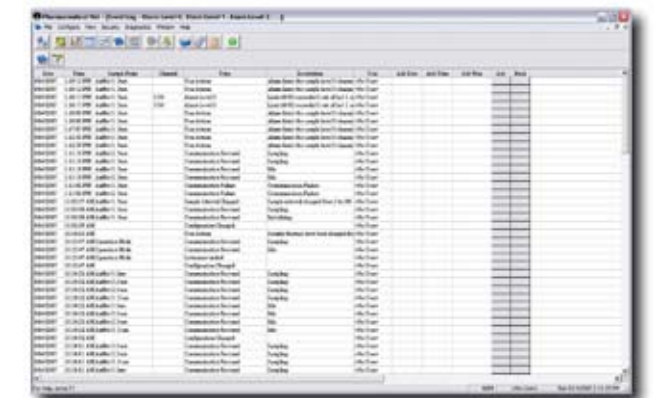
A customized map may be created to illustrate the monitoring instruments configured into the system. The status condition and current values for selected sample points are displayed on the screen and updated in real-time. The operator may add or change any monitoring instrument while Facility Net is collecting data. Multiple maps may be generated and organized to display a magnified view of specific locations within the facility.



## Event Log and Automated Tasks

An audit trail registers system activities such as alarm and warning conditions, communication errors, instrument status, configuration events, and operator actions. An operator can review each event and describe the cause in a user entry field. A job generator allows users to schedule automated tasks.

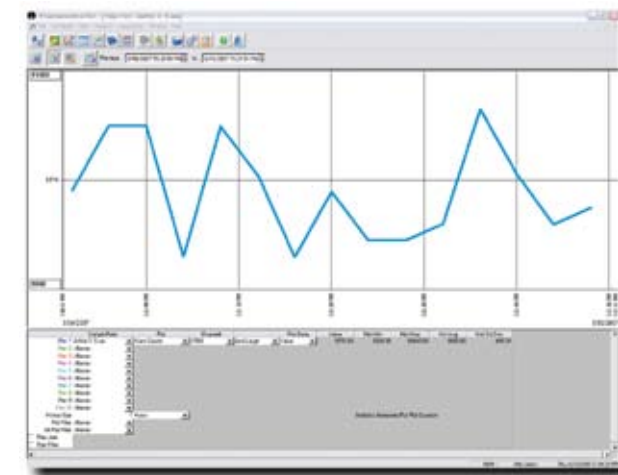
Facility Net can generate both printed and electronic reports, create a backup of the database, run recipes, operate external programs, and more, without a user present.



Date	Time	Event	Message	Priority
2008-01-01	10:00:00	Alarm	Alarm Level 1	High
2008-01-01	10:05:00	Warning	Warning Level 1	Medium
2008-01-01	10:10:00	Event	Event 1	Low
2008-01-01	10:15:00	Event	Event 2	Low
2008-01-01	10:20:00	Event	Event 3	Low

## Time Plots: Real-Time and SPC

Real-time or retrieved data may be plotted using up to ten color-coded pens for each plot. The operator may select particle and environmental sample points, alarm and warning limits, and instrument status levels to appear as selected pens on the time plot in either a linear or log scale. Multiple time plots may be displayed on the screen simultaneously and may be stored for later data analysis.



## Alarms and Paging

Facility Net allows an operator to set alarms that generate audible or visible alerts when preset limits (parameters) are exceeded. Facility Net offers four alarm levels, allowing progressively out-of-parameter conditions to trigger increasingly urgent alarms.

Alarm status information can be relayed to the Status Display, Tabular Display, and the Event Log. Alarm priorities can be set, allowing more important alarms to override less important alarms. An optional pager feature can be activated when an alarm is triggered.

