

TM 2200 TURBIDIMETER

USEPA METHOD 180.1 COMPLIANCE

- Nephelometric turbidimeter
- 0 - 100 NTU range
- > 15,000 hour tungsten light source

ALL-IN-ONE DESIGN

- De-bubbler, sensor and display in one enclosure
- One step installation
- Stand, rack, or wall mount
- Easy calibration

PATENT PENDING DE-BUBBLER

- "Wave baffle" design
- See-through design
- Removable for easy cleaning

UNIQUE SAMPLE CELL

- Up-flow, flow-through design
- Constant sample flow
- Same low-volume cell (30 mL) for operation and calibration
- Uses < 50 mL of calibration solution
- Allows for debubbler "bypass"

LOCAL DISPLAY

- Current turbidity readings
- Archived data
- Diagnostic data
- Calibration menu

MULTIPLE COMMUNICATIONS PROTOCOLS

- Modbus RTU
- Modbus ASCII
- Modbus TCP (Ethernet)
- Bluetooth capabilities (optional)

DATA STORAGE

- 1-60 minute intervals
- > 1 year (at 15 min. intervals)
- Backup to SCADA



 **CHEMTRAC**

Optimizing Water Treatment Processes

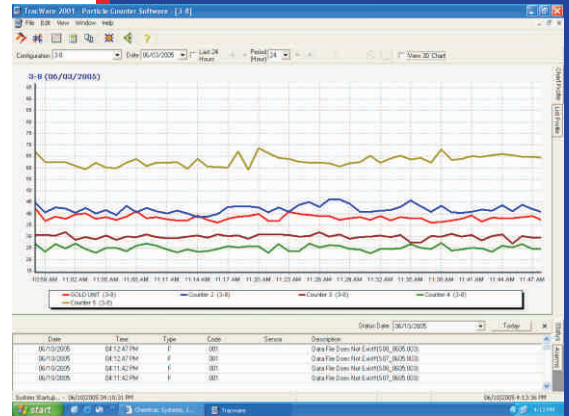
www.chemtrac.com

770-449-6233 • 800-442-8722

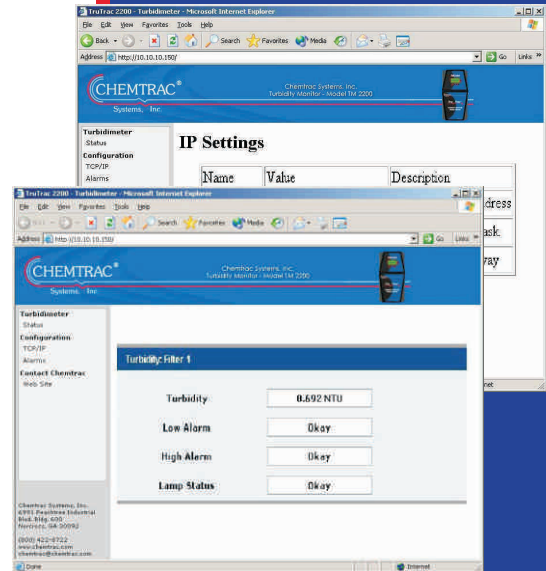
GENERAL SPECIFICATIONS

Data Collection Software
(Communicates on RS485 Network to Chemtrac Turbidimeters and Particle Counters)

Compliance:	USEPA 180.1
Range:	0 - 100 NTU
Resolution:	0.001 NTU up to 9.999 NTU; 0.01 from 10 to 100 NTU
Repeatability:	Better than $\pm 1.0\%$ of reading or ± 0.002 NTU
Signal Averaging:	User selectable from 1-90 seconds
Sample Flow:	100 to 1000 mL/min.
Sample Temperature:	0-50° C, (32-122° F)
Operating Temperature:	0-50° C, (32-122° F)
Light Source:	Tungsten lamp
Lamp Life (MTTF):	Greater than 15,000 hours (20 months)
Outputs:	Two Selectable 4-20 mA isolated, adjustable over each range
Digital Communications:	RS485 (Modbus RTU & Modbus ASCII), Ethernet (Modbus TCP), & Bluetooth (optional)
Certifications:	CSA, CE
Enclosure:	NEMA 4X
Power Requirements:	100-240 VAC, 47-63 Hz, 0.5 A
Mounting:	Single module design; wall, rack or stand mount
Dimensions:	53 cm H x 23 cm W x 20 cm D (21"H x 9"W x 8"D)
Shipping Weight:	6 Kg (13 Lbs.)



Built in Web Server
(Allows Configuration of I.P.
Settings, Alarm Configuration, &
Download of Stored Data)



 **CHEMTRAC**

Optimizing Water Treatment Processes

www.chemtrac.com

770-449-6233 • 800-442-8722