

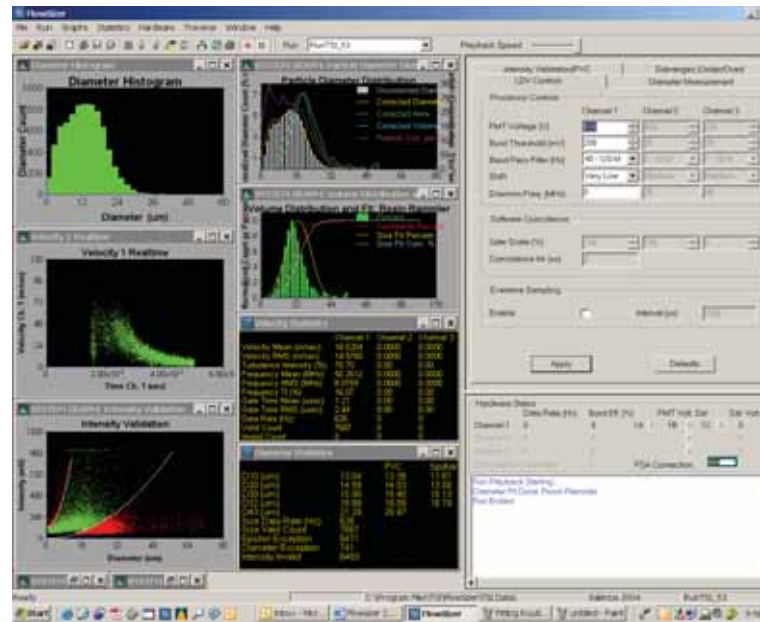
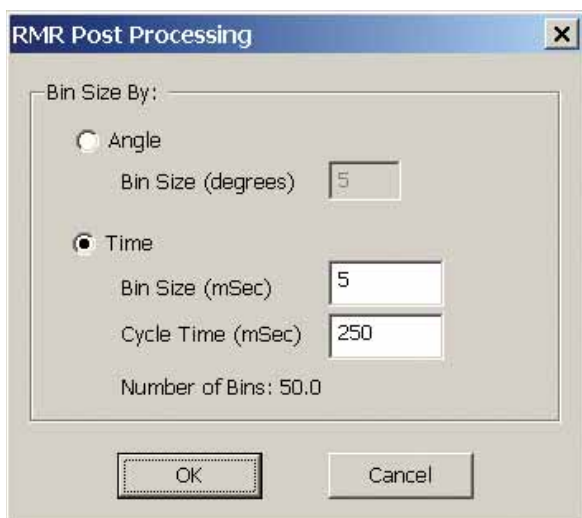
FLOWSIZER™ 2.0 Data Acquisition and Analysis Software Update—for Windows XP

TSI's FLOWSizer Data Acquisition and Analysis Software package sets the standard for Windows®-based acquisition and analysis of LDV and PDPA data. This all-new release offers many improvements and enhancements over the previous version. Even the FSA Multi-bit Digital Processor firmware was updated to keep pace with the enhanced features of FLOWSizer software.

The FLOWSizer software package has always included an easy-to-use interface, full-featured rotating machinery support, full traverse support, user-defined customizable graphics, user-defined statistics, power spectrum features, and data export. The FLOWSizer 2.0 software continues the tradition of including all the needed features in a single, 32-bit software package. Now designed for Windows XP, it offers many advantages over the previous version.

FLOWSizer Rotating Machinery Resolver (RMR) more flexible with more ways to analyze data

- Phase averaging of mean and RMS velocities and mean and RMS diameters within a user-selectable angular interval



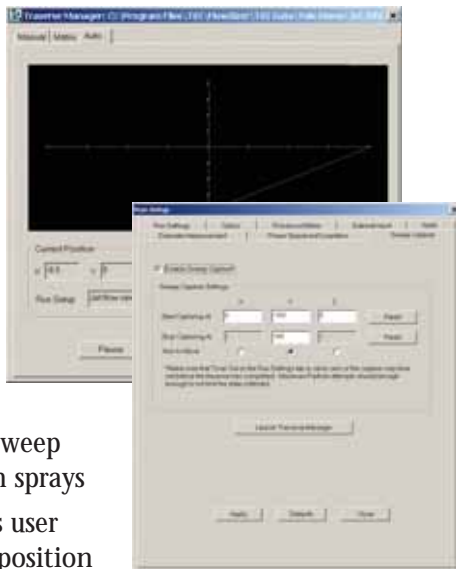
- Auto-fill function for quickly applying offsets and window disable regions
- User-selectable independent variable (time or angle-based).
- Simple TTL-based reset signal triggers new cycle, particularly useful for pulsed sprays where testing is done away from the reciprocating engine

FLOWSizer interface more user-friendly, more advanced

- Dual-monitor set-ups now possible
- Easy, two-click, menu-bar access to stored data
- Probe volume correction (PVC) over a maximum of 3000 diameter bins

FLOWSizer Traverse control even more feature packed

- Current traverse position automatically updated after each event
- Read position function easily switches between local and remote control modes
- New capture mode performs “sweep captures” through sprays
- FLOWSizer allows user entry of traverse position in manual mode
- Plot label changes “remembered” to minimize formatting edits



FLOWSizer Custom Graphics and Plots

- New diameter plots feature normal, modified log-normal, Matsumoto-Takahashi, and Nukiyama-Tanasawa fitting routines
- Normalized count (probability), normalized volume, and cumulative distributions provided
- Interarrival time now available for plot and export

FLOWSizer ASCII Export Features

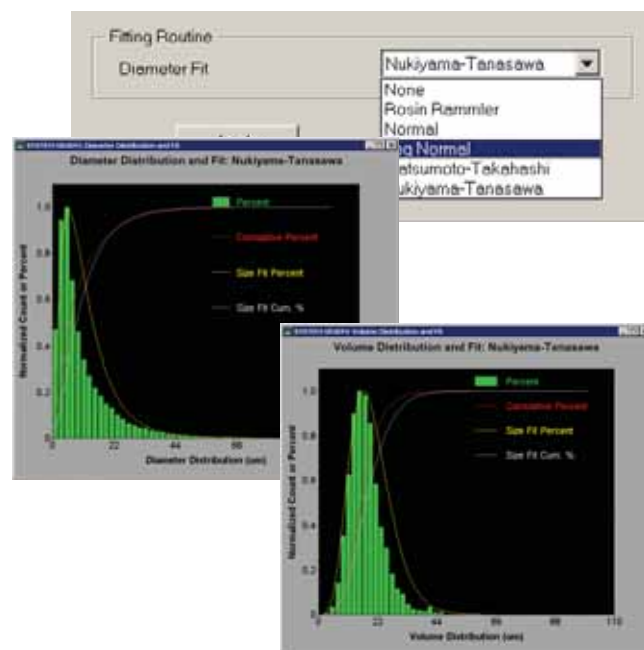
- Data exported in TecPlot® format
- New fitted diameter distributions exported
- Expanded selection of diameter and volume statistics exported for advanced statistical analysis

FLOWSizer Power Spectrum Feature

- Simultaneous computation of power spectrum of U, V, and W

FLOWSizer Custom Statistics

- Fitting parameters available from new diameter fits include normal, modified log-normal, Matsumoto-Takahashi, and Nukiyama-Tanasawa routines
- Fitted diameter statistics (D10, D20, etc) available for display and export
- Enhanced text-based statistics copy/paste function
- Inter-arrival time available for plot and ASCII-export
- Velocity statistics have increased display resolution



Windows is a trademark of Microsoft Corporation.
TecPlot is a trademark of Amtec Engineering, Inc.



TSI Incorporated

Corporate Headquarters—Tel: 651 490 2811 **Toll Free:** 1 800 874 2811 **Fax:** 651 490 3824 **E-mail:** fluid@tsi.com

China: Tel: +86-10-8260 1595 **Fax:** +86-10-8260 1597 **E-mail:** tsichina@tsi.com

Contact TSI or visit www.tsi.com for information on specific office locations worldwide.

