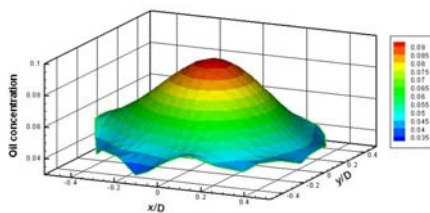


New measurement system for rapid flows

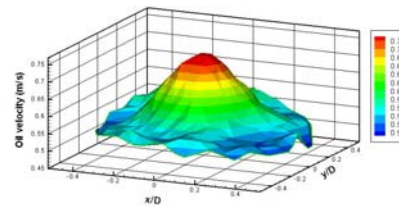
A new high speed tomography instrument is available which can be used to measure and visualise rapid flows, like never before.

The z8000 instrument from Industrial Tomography Systems can capture online data at 1000 frames/sec, which enables the measurement of rapid two phase flow in a pipe or vessel. This is particularly useful for engineers operating in the petrochemical and mining sectors, where understanding flow behaviour is crucial. The instrument is suitable for multi-phase systems such as the measurement of flowing oil water systems and hydraulic conveying of slurries.

A vertical oil-in-water flow - Oil concentration and velocity distributions taken from the z8000:



Oil Concentration



Oil Velocity

Electrical tomography provides a greater understanding of rapid flow regimes and possible application areas including slurry transportation and interface detection. Unlike other measurement systems, which are traditionally point-based; Electrical Tomography can continuously scan across a volume and provide a picture of what is going on inside a process.

Industrial Tomography Systems are the leading supplier of electrical tomography instrumentation, sensors and software. The technology is currently used in a wide range of process industries including petrochemicals, mining and the nuclear sectors.

This instrument is addition to our [m3000](#), which can measure multiphase flow through a pipe or vessel.

For more information about the [z8000](#) or any of our other products please contact:

Michael Dunne
Tel: +44 (0) 161 838 9086
michael.dunne@itoms.com

Or please visit:
www.itoms.com/z8000.htm

* The images above are computed using the data exported from the system and were produced using software now available from ITS.